

ENO3 Rabbit pAb

货号: **AYP14953**

产品信息

反应	Human,Mouse,Rat
宿主	Rabbit
克隆性	Polyclonal
预测反应	WB: SK-N-SH
应用	WB IF/ICC
推荐浓度	WB: 1:1000 - 1:4000 IF/ICC: 1:50 - 1:200
理论分子量	42kDa/44kDa/46kDa
实测分子量	47kDa
形式	Liquid
保存条件	Store at -20°C. Avoid freeze / thaw cycles. Buffer: PBS with 0.02% sodium azide,50% glycerol,pH7.3.
偶联物	Unconjugated
阳性对照	HepG2,SW620,A-549,HeLa,Mouse heart,Mouse skeletal muscle,Rat heart
细胞定位	Cytoplasm
纯化	Affinity purification

抗原信息

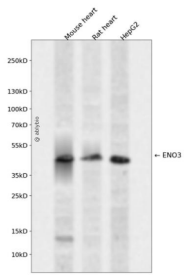
抗原信息	Recombinant fusion protein containing a sequence corresponding to amino acids 1-190 of human ENO3 (NP_001967.3).
序列	MAMQKIFAREILDSRGNPTVEVDLHTAKGRFRAAVPSGASTGIYEALERDGDKGGRYLGKGVLKAVENINNTLGPALLQKK LSVVDQEKVDKFMIELDGTENKSKFGANAILGVSLAVCKAGAAEKGVPLYRHIADLAGNPDILPVPFVINGGSHAGNK LAMQEFMILPVGASSFKEAMRIGAEVYH

靶点信息

研究背景	This gene encodes one of the three enolase isoenzymes found in mammals. This isoenzyme is found in skeletal muscle cells in the adult where it may play a role in muscle development and regeneration. A switch from alpha enolase to beta enolase occurs in muscle tissue during development in rodents. Mutations in this gene have been associated with glycogen storage disease. Alternatively spliced transcript variants encoding different isoforms have been described.
------	---------------------------------------------------------------------------------------------------------------------------------------------------------------------------------------------------------------------------------------------------------------------------------------------------------------------------------------------------------------------------------------------------------------------------------------------------------------------------------

基因ID	2027
基因名	ENO3
Swiss	P13929
别名	ENO3;GSD13;MSE;enolase 3

产品验证



Western blot analysis of ENO3 expressed in Mouse heart,Rat heart,HepG2 using ENO3 Rabbit pAb at 1:1 000. Secondary antibody: HRP Goat Anti-Rabbit IgG (H+L) at 1:5000. Lysates/proteins: 30ug per lane. B locking buffer: 5% non-fat dry milk in TBST. Detection: ECL Enhanced Kit. Exposure time: 120s.

实验步骤

访问官网浏览详情: www.ablybio.cn