

RGS16 Rabbit pAb

货号: **AYP14952**

产品信息

反应	Human,Mouse,Rat
宿主	Rabbit
克隆性	Polyclonal
预测反应	IHC: Mouse brain tumor tissue
应用	WB IHC
推荐浓度	WB: 1:200 - 1:2000 IHC: 1:50 - 1:200
理论分子量	22kDa
实测分子量	22kDa
形式	Liquid
保存条件	Store at -20°C. Avoid freeze / thaw cycles. Buffer: PBS with 0.02% sodium azide,50% glycerol,pH7.3.
偶联物	Unconjugated
阳性对照	Mouse lung
细胞定位	cytoplasm,plasma membrane
纯化	Affinity purification

抗原信息

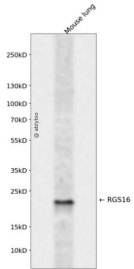
抗原信息	Recombinant fusion protein containing a sequence corresponding to amino acids 1-202 of human RGS16 (NP_002919.3).
序列	MCRTLAAFPTTCLERAKEFKTRLGIFLHKSELGCDTGSTGKFEWGSKHSKENRNFSEDVLGWRESFDLLLSSKNGVAAFH AFLKTEFSEENLEFWLACEEFKKIRSATKLASRAHQIFEEFICSEAPKEVNIDHETHELTRMNLQTATATCFDAAQ GKTRTLM EKDSYPRFLKSPAYRD LAAQASAASATLSSCSLDEPSHT

靶点信息

研究背景	The protein encoded by this gene belongs to the 'regulator of G protein signaling' family. It inhibits signal transduction by increasing the GTPase activity of G protein alpha subunits. It also may play a role in regulating the kinetics of signaling in the phototransduction cascade.
基因ID	6004

基因名	RGS16
Swiss	O15492
别名	RGS16;A28-RGS14;A28-RGS14P;RGS-R

产品验证



Western blot analysis of RGS16 expressed in Mouse lung using RGS16 Rabbit pAb at 1:1000. Secondary antibody: HRP Goat Anti-Rabbit IgG (H+L) at 1:5000. Lysates/proteins: 30ug per lane. Blocking buffer: 5% non-fat dry milk in TBST. Detection: ECL Enhanced Kit. Exposure time: 120s.

实验步骤

访问官网浏览详情: www.ablybio.cn