

MRPS26 Rabbit pAb

货号: **AYP14946**

产品信息

反应	Human,Mouse,Rat
宿主	Rabbit
克隆性	Polyclonal
预测反应	WB: Mouse liver
应用	WB IHC
推荐浓度	WB: 1:500 - 1:2000 IHC: 1:100 - 1:200
理论分子量	24kDa
实测分子量	24kDa
形式	Liquid
保存条件	Store at -20°C. Avoid freeze / thaw cycles. Buffer: PBS with 0.01% thiomersal,50% glycerol,pH7.3.
偶联物	Unconjugated
阳性对照	HeLa,A-431
细胞定位	Mitochondrion
纯化	Affinity purification

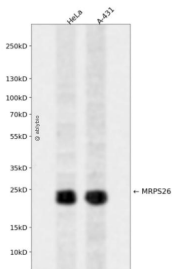
抗原信息

抗原信息	Recombinant fusion protein containing a sequence corresponding to amino acids 1-205 of human MRPS26 (NP_110438.1).
序列	MLRALSRLGAGTPCRPRAPLVLPARGRKTRHDPLAKSKIERNMPPAVDPAEFFVLMERYQHYRQTVRALRMEFVSEVQRK VHEARAGVLAERKALKDAAEHRELMAWNQAENRRRLHELRIARLRQEEREQEQRQALEQARKAEVQAWAQRKEREVLQL QEEVKNFITRENLEARVEAALDSRKNYNWAITREGLVVRPQRDS

靶点信息

研究背景	Mammalian mitochondrial ribosomal proteins are encoded by nuclear genes and help in protein synthesis within the mitochondrion. Mitochondrial ribosomes (mitoribosomes) consist of a small 28S subunit and a large 39S subunit. They have an estimated 75% protein to rRNA composition compared to prokaryotic ribosomes, where this ratio is reversed. Another difference between mammalian mitoribosomes and prokaryotic ribosomes is that the latter contain a 5S rRNA. Among different species, the proteins comprising the mitoribosome differ greatly in sequence, and sometimes in biochemical properties, which prevents easy recognition by sequence homology. This gene encodes a 28S subunit protein. This gene lies adjacent to and downstream of the gonadotropin-releasing hormone precursor gene.
基因ID	64949
基因名	MRPS26
Swiss	Q9BYN8
别名	MRPS26;C20orf193;GI008;MRP-S13;MRP-S26;MRPS13;NY-BR-87;RPMS13;dj534B8.3

产品验证



Western blot analysis of MRPS26 expressed in HeLa, A-431 using MRPS26 Rabbit pAb at 1:1000. Secondary antibody: HRP Goat Anti-Rabbit IgG (H+L) at 1:5000. Lysates/proteins: 30ug per lane. Blocking buffer: 5% non-fat dry milk in TBST. Detection: ECL Enhanced Kit. Exposure time: 120s.

实验步骤

访问官网浏览详情: www.ablybio.cn