

# MRPL11 Rabbit pAb

货号: **AYP14945**

## 产品信息

反应	Human,Mouse,Rat
宿主	Rabbit
克隆性	Polyclonal
预测反应	<b>WB:</b> Human,Mouse
应用	<a href="#">WB</a>
推荐浓度	<b>WB:</b> 1:500 - 1:2000
理论分子量	18kDa/19kDa/20kDa
实测分子量	21kDa
形式	Liquid
保存条件	Store at -20°C. Avoid freeze / thaw cycles. Buffer: PBS with 0.02% sodium azide,50% glycerol,pH7.3.
偶联物	Unconjugated
阳性对照	HepG2,HeLa,MCF7,A-549,Mouse kidney,Mouse brain,Mouse heart,Rat heart
细胞定位	Mitochondrion
纯化	Affinity purification

## 抗原信息

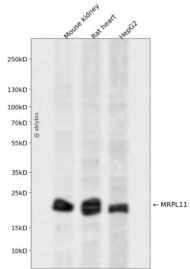
抗原信息	Recombinant fusion protein containing a sequence corresponding to amino acids 1-192 of human MRPL11 (NP_057134.1).
序列	MSKLGRAARGLRKPEVGGVIRAIVRAGLAMPGPPLGVLGQRGVSIHQFCKEFNERTKDIKEGIPLPTKILVKPDRTFEIKIGQPTVSYFLKAAAGIEK GARQTGKEVAGLVTLKHVYEIARIKAQDEAFALQDVPLSSVRSIIGSARSLGIRVVKDLSSEELAA FQKERAIFLAAQKEADLAAQEAAKK

## 靶点信息

研究背景	This nuclear gene encodes a 39S subunit component of the mitochondrial ribosome. Alternative splicing results in multiple transcript variants. Pseudogenes for this gene are found on chromosomes 5 and 12.
基因ID	65003

基因名	MRPL11
Swiss	Q9Y3B7
别名	MRPL11;CGI-113;L11MT;MRP-L11

## 产品验证



Western blot analysis of MRPL11 expressed in Mouse kidney,Rat heart,HepG2 using MRPL11 Rabbit pAb at 1:1000. Secondary antibody: HRP Goat Anti-Rabbit IgG (H+L) at 1:5000. Lysates/proteins: 30ug per lane. Blocking buffer: 5% non-fat dry milk in TBST. Detection: ECL Enhanced Kit. Exposure time: 120s.

## 实验步骤

访问官网浏览详情: [www.ablybio.cn](http://www.ablybio.cn)