

NLRX1 Rabbit pAb

货号: **AYP14944**

产品信息

反应	Human,Mouse,Rat
宿主	Rabbit
克隆性	Polyclonal
预测反应	
应用	WB IP
推荐浓度	WB: 1:500 - 1:2000 IP: 1:500 - 1:1000
理论分子量	101kDa/107kDa
实测分子量	108kDa
形式	Liquid
保存条件	Store at -20°C. Avoid freeze / thaw cycles. Buffer: PBS with 0.01% thiomersal,50% glycerol,pH7.3.
偶联物	Unconjugated
阳性对照	MCF7,Mouse heart,Mouse kidney,Mouse liver,Mouse lung,Rat liver
细胞定位	Mitochondrion outer membrane
纯化	Affinity purification

抗原信息

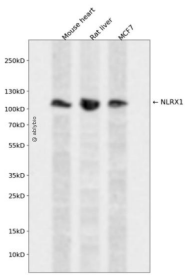
抗原信息	Recombinant fusion protein containing a sequence corresponding to amino acids 87-360 of human NLRX1 (NP_001269073.1).
序列	AEWFSRLPREERQFGPTFALDTVHVDPVIRESTPDELLRPPAELALEHQPPQAGLPPLALSQLFNPDACGRRVQTVVLYGTV GTGKSTLVRKMVLWDWCYGRLPAPAFELLIPFSCEDLSSLGPAPASLCQLVAQRYTPLKEVPLMAAAGSHLLFVLHGLEHLNLD FRLAGTGLCSDPEEPQEPAAIIVNLLRKYMLPQASILVTTRPSAIGRIPSKYVGRYGEICGFSDTNLQKLYFQLRLNQPYCGYA VGGSGVSATPAQRDHLVQMLSRNLEG

靶点信息

研究背景	The protein encoded by this gene is a member of the NLR family and localizes to the outer mitochondrial membrane. The encoded protein is a regulator of mitochondrial antiviral responses. Three transcript variants encoding the same protein have been found for this gene.
------	---

基因ID	79671
基因名	NLRX1
Swiss	Q86UT6
别名	NLRX1;CLR11.3;DLNB26;NOD26;NOD5;NOD9

产品验证



Western blot analysis of NLRX1 expressed in Mouse heart,Rat liver,MCF7 using NLRX1 Rabbit pAb at 1:1000. Secondary antibody: HRP Goat Anti-Rabbit IgG (H+L) at 1:5000. Lysates/proteins: 30ug per lane. Blocking buffer: 5% non-fat dry milk in TBST. Detection: ECL Enhanced Kit. Exposure time: 120s.

实验步骤

访问官网浏览详情: www.ablybio.cn