

# RPLP1 Rabbit pAb

货号: **AYP14925**

## 产品信息

反应	Human,Mouse,Rat,Zebrafish
宿主	Rabbit
克隆性	Polyclonal
预测反应	<b>WB:</b> Zebrafish
应用	<a href="#">WB</a> <a href="#">IF/ICC</a>
推荐浓度	<b>WB:</b> 1:500 - 1:2000 <b>IF/ICC:</b> 1:50 - 1:100
理论分子量	8kDa/11kDa
实测分子量	17kDa
形式	Liquid
保存条件	Store at -20°C. Avoid freeze / thaw cycles. Buffer: PBS with 0.02% sodium azide,50% glycerol,pH7.3.
偶联物	Unconjugated
阳性对照	SW480,Mouse spleen,Mouse lung,Mouse brain,Rat spleen,Rat lung,Rat brain
细胞定位	cytoplasm,cytosol,cytosolic ribosome,focal adhesion
纯化	Affinity purification

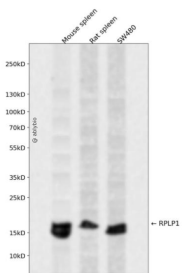
## 抗原信息

抗原信息	Recombinant fusion protein containing a sequence corresponding to amino acids 1-114 of human RPLP1 (NP_000994.1).
序列	MASVSELACIYSALILHDDEVTVTEDKINALIKAAGVNVPEFPWPLFAKALANVNIIGSLICNVGAGGPAPAAGAAPAGGPAPSTAAAPAEKKVEAKKEESEESDDDDMGFGLFD

## 靶点信息

研究背景	Ribosomes, the organelles that catalyze protein synthesis, consist of a small 40S subunit and a large 60S subunit. Together these subunits are composed of 4 RNA species and approximately 80 structurally distinct proteins. This gene encodes a ribosomal phosphoprotein that is a component of the 60S subunit. The p protein, which is a functional equivalent of the E. coli L7/L12 ribosomal protein, belongs to the L12P family of ribosomal proteins. It plays an important role in the elongation step of protein synthesis. Unlike most ribosomal proteins, which are basic, the encoded protein is acidic. Its C-terminal end is nearly identical to the C-terminal ends of the ribosomal phosphoproteins P0 and P2. The P1 protein can interact with P0 and P2 to form a pentameric complex consisting of P1 and P2 dimers, and a P0 monomer. The protein is located in the cytoplasm. Two alternatively spliced transcript variants that encode different proteins have been observed. As is typical for genes encoding ribosomal proteins, there are multiple processed pseudogenes of this gene dispersed through the genome.
基因ID	6176
基因名	RPLP1
Swiss	P05386
别名	RPLP1;LP1;P1;RPP1

## 产品验证



Western blot analysis of RPLP1 expressed in Mouse spleen, Rat spleen, SW480 using RPLP1 Rabbit pAb at 1:1000. Secondary antibody: HRP Goat Anti-Rabbit IgG (H+L) at 1:5000. Lysates/proteins: 30ug per lane. Blocking buffer: 5% non-fat dry milk in TBST. Detection: ECL Enhanced Kit. Exposure time: 120s.

## 实验步骤

访问官网浏览详情: [www.ablybio.cn](http://www.ablybio.cn)