

# SPTLC1 Rabbit pAb

货号: **AYP14924**

## 产品信息

反应	Human,Mouse,Rat
宿主	Rabbit
克隆性	Polyclonal
预测反应	<b>WB:</b> HeLa
应用	<a href="#">WB</a>
推荐浓度	<b>WB:</b> 1:500 - 1:2000
理论分子量	16kDa/52kDa
实测分子量	53kDa
形式	Liquid
保存条件	Store at -20°C. Avoid freeze / thaw cycles. Buffer: PBS with 0.02% sodium azide,50% glycerol,pH7.3.
偶联物	Unconjugated
阳性对照	SKOV3,MCF7,HepG2,Mouse kidney,Mouse lung,Mouse liver,Mouse thymus,Rat lung,Rat kidney
细胞定位	Endoplasmic reticulum membrane,Single-pass membrane protein
纯化	Affinity purification

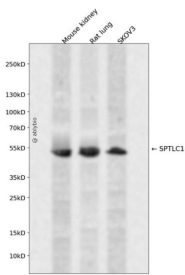
## 抗原信息

抗原信息	Recombinant fusion protein containing a sequence corresponding to amino acids 37-310 of human SPTLC1 (NP_006406.1).
序列	RLLFSKTYKLQERSDLTVKEKEELIEEWQPEPLVPPVPKDHDPALNYNIVSGPPSHKTVVNGKECINFASFNFLGLLDNPRVKA AALASLKKYGVGTCGPRGFYGTDFVHLDLEDRLAKFMKTEEIIYSYGFATIASAIPAYSKRGDIVFDRAACFAIQKGLQAS RSDIKLFKHNDMADLERLLKEQIEDQKNPRKARVTRRFIVVEGLYMNTGTICPLPELVKLYKYKARIFLEESLSFGVLGEH GRGVTEHYGINIDDIDLISANMENA

## 靶点信息

研究背景	This gene encodes a member of the class-II pyridoxal-phosphate-dependent aminotransferase family. The encoded protein is the long chain base subunit 1 of serine palmitoyltransferase. Serine palmitoyltransferase converts L-serine and palmitoyl-CoA to 3-oxosphinganine with pyridoxal 5'-phosphate and is the key enzyme in sphingolipid biosynthesis. Mutations in this gene were identified in patients with hereditary sensory neuropathy type 1. Alternatively spliced variants encoding different isoforms have been identified. Pseudogenes of this gene have been defined on chromosomes 1, 6, 10, and 13.
基因ID	10558
基因名	SPTLC1
Swiss	O15269
别名	SPTLC1;HSAN1;HSN1;LBC1;LCB1;SPT1;SPTI

## 产品验证



Western blot analysis of SPTLC1 expressed in Mouse kidney,Rat lung,SKOV3 using SPTLC1 Rabbit pAb at 1:1000. Secondary antibody: HRP Goat Anti-Rabbit IgG (H+L) at 1:5000. Lysates/proteins: 30ug per lane. Blocking buffer: 5% non-fat dry milk in TBST. Detection: ECL Enhanced Kit. Exposure time: 120s.

## 实验步骤

访问官网浏览详情: [www.ablybio.cn](http://www.ablybio.cn)