

Phospho-EGFR-T669 Rabbit pAb

货号: **AYP14914**

产品信息

反应	Human
宿主	Rabbit
克隆性	Polyclonal
预测反应	WB: A551
应用	WB IP
推荐浓度	WB: 1:500 - 1:2000 IP: 1:50 - 1:100
理论分子量	44kDa/69kDa/77kDa/134kDa
实测分子量	200kDa
形式	Liquid
保存条件	Store at -20°C. Avoid freeze / thaw cycles. Buffer: PBS with 0.02% sodium azide,50% glycerol,pH7.3.
偶联物	Unconjugated
阳性对照	A-431,HUVEC
细胞定位	Cell membrane,Endoplasmic reticulum membrane,Endosome,Endosome membrane,Golgi apparatus membrane,Nucleus membrane,Nucleus,Secreted,Single-pass type I membrane protein
纯化	Affinity purification

抗原信息

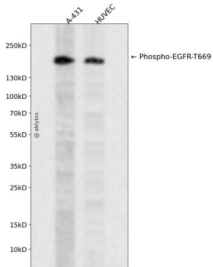
抗原信息	A synthetic phosphorylated peptide around T669 of human EGFR (NP_005219.2).
序列	PLTPS

靶点信息

研究背景	The protein encoded by this gene is a transmembrane glycoprotein that is a member of the protein kinase superfamily. This protein is a receptor for members of the epidermal growth factor family. EGFR is a cell surface protein that binds to epidermal growth factor. Binding of the protein to a ligand induces receptor dimerization and tyrosine autophosphorylation and leads to cell proliferation. Mutations in this gene are associated with lung cancer.
基因ID	1956

基因名	EGFR
Swiss	P00533
别名	EGFR;ERBB;ERBB1;HER1;NISBD2;PIG61;mENA

产品验证



Western blot analysis of Phospho-EGFR-T669 expressed in A-431, HUVEC using Phospho-EGFR-T669 R abbit pAb at 1:1000. Secondary antibody: HRP Goat Anti-Rabbit IgG (H+L) at 1:5000. Lysates/protein s: 30ug per lane. Blocking buffer: 5% non-fat dry milk in TBST. Detection: ECL Enhanced Kit. Exposur e time: 120s.

实验步骤

访问官网浏览详情: www.ablybio.cn