

ADRB1 Rabbit pAb

货号: **AYP14911**

产品信息

| | |
|-------|------------------------------------------------------------------------------------------------------|
| 反应 | Mouse,Rat |
| 宿主 | Rabbit |
| 克隆性 | Polyclonal |
| 预测反应 | |
| 应用 | WB IF/ICC |
| 推荐浓度 | WB: 1:500 - 1:2000 IF/ICC: 1:50 - 1:200 |
| 理论分子量 | 51kDa |
| 实测分子量 | 51kDa |
| 形式 | Liquid |
| 保存条件 | Store at -20°C. Avoid freeze / thaw cycles. Buffer: PBS with 0.01% thiomersal,50% glycerol,pH7.3. |
| 偶联物 | Unconjugated |
| 阳性对照 | mouse brain, rat spinal cord |
| 细胞定位 | early endosome, neuronal dense core vesicle, plasma membrane, Schaffer collateral - CA1 synapse |
| 纯化 | Affinity purification |

抗原信息

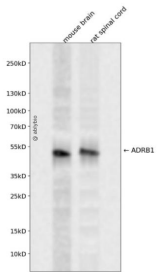
| | |
|------|--------------------------------------------------------------------------------------------------------------|
| 抗原信息 | A synthetic peptide corresponding to a sequence within amino acids 150-250 of human ADRB1 (NP_000675.1). |
| 序列 | CVIALDRYLAI TSPFRYQSL LTRARARGLVCTVW AISALV SFLPILMHWWRAESDEARRCYNDPKCCDFVTNRAYAIASSVV SFYVPLCIMA FVYLRV FRE |

靶点信息

| | |
|------|-----------------------------------------------------------------------------------------------------------------------------------------------------------------------------------------------------------------------------------------------------------------------------------------------------------------------------------------------------------------------------------------------------------|
| 研究背景 | The adrenergic receptors (subtypes alpha 1, alpha 2, beta 1, and beta 2) are a prototypic family of guanine nucleotide binding regulatory protein-coupled receptors that mediate the physiological effects of the hormone epinephrine and the neurotransmitter norepinephrine. Specific polymorphisms in this gene have been shown to affect the resting heart rate and can be involved in heart failure. |
| 基因ID | 153 |

| | |
|-------|-------------------------------|
| 基因名 | ADRB1 |
| Swiss | P08588 |
| 别名 | ADRB1;ADRB1R;B1AR;BETA1AR;RHR |

产品验证



Western blot analysis of ADRB1 expressed in mouse brain, rat spinal cord using ADRB1 Rabbit pAb at 1:10 00. Secondary antibody: HRP Goat Anti-Rabbit IgG (H+L) at 1:5000. Lysates/proteins: 30ug per lane. Blocking buffer: 5% non-fat dry milk in TBST. Detection: ECL Enhanced Kit. Exposure time: 120s.

实验步骤

访问官网浏览详情: www.ablybio.cn