

# GPC1 Rabbit pAb

货号: **AYP14910**

## 产品信息

反应	Human,Mouse,Rat
宿主	Rabbit
克隆性	Polyclonal
预测反应	<b>WB:</b> Mouse liver
应用	<a href="#">WB</a> <a href="#">IF/ICC</a>
推荐浓度	<b>WB:</b> 1:500 - 1:2000 <b>IF/ICC:</b> 1:50 - 1:200
理论分子量	31kDa/61kDa
实测分子量	62kDa
形式	Liquid
保存条件	Store at -20°C. Avoid freeze / thaw cycles. Buffer: PBS with 0.01% thiomersal,50% glycerol,pH7.3.
偶联物	Unconjugated
阳性对照	NIH/3T3,Mouse brain,Rat brain
细胞定位	Cell membrane,Endosome,Extracellular side,GPI-anchor,Lipid-anchor,Secreted,extracellular space
纯化	Affinity purification

## 抗原信息

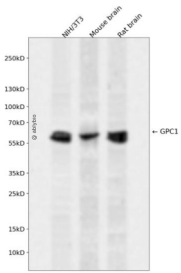
抗原信息	Recombinant fusion protein containing a sequence corresponding to amino acids 290-420 of human GPC1 (NP_002072.2).
序列	WRNLLDSMVLITDKFWGTSGVESVIGSVHTWLAEAINALQDNRDTLTAKVIQCGGNPKVNPQGGPPEEKRRRGKLAPRE RPPSGTLEKLVSEAKAQLRDVQDFWISLPGTLCSEKMALSTASDDRCWNGMA

## 靶点信息

研究背景	Cell surface heparan sulfate proteoglycans are composed of a membrane-associated protein core substituted with a variable number of heparan sulfate chains. Members of the glypican-related integral membrane proteoglycan family (GRIPS) contain a core protein anchored to the cytoplasmic membrane via a glycosyl phosphatidylinositol linkage. These proteins may play a role in the control of cell division and growth regulation.
------	--

基因ID	2817
基因名	GPC1
Swiss	P35052
别名	GPC1;glypican

## 产品验证



Western blot analysis of GPC1 expressed in NIH/3T3, Mouse brain, Rat brain using GPC1 Rabbit pAb at 1:1000. Secondary antibody: HRP Goat Anti-Rabbit IgG (H+L) at 1:5000. Lysates/proteins: 30ug per lane. Blocking buffer: 5% non-fat dry milk in TBST. Detection: ECL Enhanced Kit. Exposure time: 120s.

## 实验步骤

访问官网浏览详情: [www.ablybio.cn](http://www.ablybio.cn)