

# RAB3A Rabbit pAb

货号: **AYP14902**

## 产品信息

反应	Mouse,Rat
宿主	Rabbit
克隆性	Polyclonal
预测反应	<b>WB:</b> mouse brain
应用	<a href="#">WB</a> <a href="#">IF/ICC</a>
推荐浓度	<b>WB:</b> 1:500 - 1:2000 <b>IF/ICC:</b> 1:50 - 1:200
理论分子量	24kDa
实测分子量	25kDa
形式	Liquid
保存条件	Store at -20°C. Avoid freeze / thaw cycles. Buffer: PBS with 0.01% thiomersal,50% glycerol,pH7.3.
偶联物	Unconjugated
阳性对照	Mouse brain,Rat brain
细胞定位	Cell membrane,Cytoplasmic side,Lipid-anchor
纯化	Affinity purification

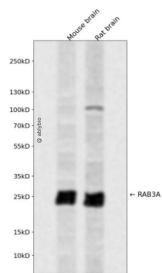
## 抗原信息

抗原信息	A synthetic peptide corresponding to a sequence within amino acids 100-200 of human RAB3A (NP_002857.1).
序列	LMYDITNEESFNAVQDWSTQIKTYSWDNAQVLLVGNKCDMEDERVVSSERGRQLADHLGFEFFEASAKDNINVKQTFERLVDVICEKMSESLDTADPAVTG

## 靶点信息

研究背景	Small GTP-binding protein that plays a central role in regulated exocytosis and secretion. Controls the recruitment, tethering and docking of secretory vesicles to the plasma membrane (By similarity. Upon stimulation, switches to its active GTP-bound form, cycles to vesicles and recruits effectors such as RIMS1, RIMS2, Rabphilin-3A/RPH3A, RPH3AL or SYTL4 to help the docking of vesicles onto the plasma membrane (By similarity. Upon GTP hydrolysis by GTPase-activating protein, dissociates from the vesicle membrane allowing the exocytosis to proceed (By similarity. Stimulates insulin secretion through interaction with RIMS2 or RPH3AL effectors in pancreatic beta cells (By similarity. Regulates calcium-dependent lysosome exocytosis and plasma membrane repair (PMR via the interaction with 2 effectors, SYTL4 and myosin-9/MYH9. Acts as a positive regulator of acrosome content secretion in sperm cells by interacting with RIMS1. Plays also a role in the regulation of dopamine release by interacting with synaptotagmin I/SYT (By similarity. Interacts with MADD (via uDENN domain; the GTP-bound form is preferred for interaction (By similarity.
基因ID	5864
基因名	RAB3A
Swiss	P20336
别名	RAB3A

## 产品验证



Western blot analysis of RAB3A expressed in Mouse brain, Rat brain using RAB3A Rabbit pAb at 1:1000. Secondary antibody: HRP Goat Anti-Rabbit IgG (H+L) at 1:5000. Lysates/proteins: 30ug per lane. Blocking buffer: 5% non-fat dry milk in TBST. Detection: ECL Enhanced Kit. Exposure time: 120s.

## 实验步骤

访问官网浏览详情: [www.ablybio.cn](http://www.ablybio.cn)