

# Phospho-Beclin 1-Ser90 Rabbit pAb

货号: **AYP14813**

## 产品信息

反应	Human,Mouse
宿主	Rabbit
克隆性	Polyclonal
预测反应	<b>WB:</b> Juvenile tilapia
应用	<a href="#">WB</a>
推荐浓度	<b>WB:</b> 1:100 - 1:500
理论分子量	52kDa
实测分子量	60KDa
形式	Liquid
保存条件	Store at -20°C. Avoid freeze / thaw cycles. Buffer: PBS with 0.05% proclin300,50% glycerol,pH7.3.
偶联物	Unconjugated
阳性对照	HeLa,NIH/3T3
细胞定位	Cytoplasm,Cytoplasmic vesicle,Endoplasmic reticulum membrane,Endosome,Endosome membrane,Golgi apparatus,Mitochondrion,Mitochondrion membrane,Nucleus,Peripheral membrane protein,autophagosome,trans-Golgi network membrane
纯化	Affinity purification

## 抗原信息

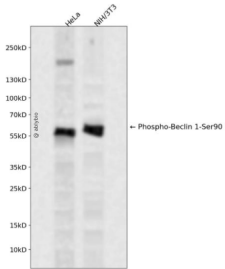
抗原信息	A synthetic phosphorylated peptide around S90 of human Beclin 1 (NP_003757.1).
序列	MMSTE

## 靶点信息

研究背景	This gene encodes a protein that regulates autophagy, a catabolic process of degradation induced by starvation. The encoded protein is a component of the phosphatidylinositol-3-kinase (PI3K) complex which mediates vesicle-trafficking processes. This protein is thought to play a role in multiple cellular processes, including tumorigenesis, neurodegeneration and apoptosis. Alternative splicing results in multiple transcript variants.
基因ID	8678

基因名	BECN1
Swiss	Q14457
别名	ATG6;VPS30;beclin1;Beclin 1;BECN1;beclin-1

## 产品验证



Western blot analysis of Phospho-Beclin 1-Ser90 expressed in HeLa,NIH/3T3 using Phospho-Beclin 1-Ser90 Rabbit pAb at 1:1000. Secondary antibody: HRP Goat Anti-Rabbit IgG (H+L) at 1:5000. Lysates/proteins: 30ug per lane. Blocking buffer: 5% non-fat dry milk in TBST. Detection: ECL Enhanced Kit. Exposure time: 120s.

## 实验步骤

访问官网浏览详情: [www.ablybio.cn](http://www.ablybio.cn)