

PLIN5 Rabbit pAb

货号: **AYP14792**

产品信息

反应	Human,Mouse,Rat
宿主	Rabbit
克隆性	Polyclonal
预测反应	WB: Mus musculus
应用	WB IF/ICC
推荐浓度	WB: 1:500 - 1:1000 IF/ICC: 1:50 - 1:200
理论分子量	50kDa
实测分子量	51kDa
形式	Liquid
保存条件	Store at -20°C. Avoid freeze / thaw cycles. Buffer: PBS with 0.05% proclin300,50% glycerol,pH7.3.
偶联物	Unconjugated
阳性对照	HepG2,Mouse liver,Mouse heart,Rat heart
细胞定位	
纯化	Affinity purification

抗原信息

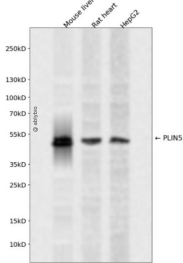
抗原信息	Recombinant fusion protein containing a sequence corresponding to amino acids 270-463 of human PLIN 5 (NP_001013728.2).
序列	PPESRRRSQAELETLVLSRSLTQELQGTVEALESSVRGLPAGAQEKVAEVRRSVDALQTAFADARCFRDVPAALAEGRG RVAHAHACVDELLELVVQAVPLPWLVGPFAPILVERPEPLDLADLVDEVIGGPDPRWAHLDPWAQQRAWAEHRDGS NGDGRMGVAGDICEQEPETPSCPVKHTLMPELDF

靶点信息

研究背景	Members of the perilipin family, such as PLIN5, coat intracellular lipid storage droplets and protect them from lipolytic degradation (Dalen et al., 2007 [PubMed 17234449]).
基因ID	440503

基因名	PLIN5
Swiss	Q00G26
别名	MLDP; LSDA5; LSDP5; OXPAT

产品验证



Western blot analysis of PLIN5 expressed in Mouse liver,Rat heart,HepG2 using PLIN5 Rabbit pAb at 1:1 000. Secondary antibody: HRP Goat Anti-Rabbit IgG (H+L) at 1:5000. Lysates/proteins: 30ug per lane. B locking buffer: 5% non-fat dry milk in TBST. Detection: ECL Enhanced Kit. Exposure time: 120s.

实验步骤

访问官网浏览详情: www.ablybio.cn