

ICAM1 Rabbit pAb

货号: **AYP14778**

产品信息

反应	Human,Mouse,Rat
宿主	Rabbit
克隆性	Polyclonal
预测反应	WB: Sus scrofa
应用	WB IHC
推荐浓度	WB: 1:500 - 1:1000 IHC: 1:50 - 1:200
理论分子量	58kDa
实测分子量	85KDa
形式	Liquid
保存条件	Store at -20°C. Avoid freeze / thaw cycles. Buffer: PBS with 0.05% proclin300,50% glycerol,pH7.3.
偶联物	Unconjugated
阳性对照	Rat lung
细胞定位	cell surface,external side of plasma membrane,extracellular exosome,extracellular space,immunological synapse,plasma membrane
纯化	Affinity purification

抗原信息

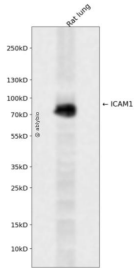
抗原信息	Recombinant fusion protein containing a sequence corresponding to amino acids 120-320 of mouse ICAM 1 (NP_034623.1).
序列	LPAWQQVGGKDLTLRCHVDGGAPRTQLSAVLLRGEEILSRQPVGGHPKDPKEITFTVLASRGDHGANFSCRTELDLRPQGLALFSNVSEARSLRTFDLPATIPKLDTPDLLEVGTQQKLFCSLEGLFPASEARIYLELGGQMPTQESTNSSDSVSATALVEVTE EFDRTLPLRCVLELADQILETQRTLTVYNFSAPVLTLS

靶点信息

研究背景	This gene encodes an integral membrane protein that binds leukocyte adhesion protein LFA-1. It participates in the innate immune response.
基因ID	15894

基因名	
Swiss	P13597
别名	MAL; CD54; Icam; Ly-4; Ly-47; Icam-1; MALA-2

产品验证



Western blot analysis of ICAM1 expressed in Rat lung using ICAM1 Rabbit pAb at 1:1000. Secondary antibody: HRP Goat Anti-Rabbit IgG (H+L) at 1:5000. Lysates/proteins: 30ug per lane. Blocking buffer: 5% non-fat dry milk in TBST. Detection: ECL Enhanced Kit. Exposure time: 120s.

实验步骤

访问官网浏览详情: www.ablybio.cn