

G6PC Rabbit pAb

货号: **AYP14746**

产品信息

反应	Mouse,Rat
宿主	Rabbit
克隆性	Polyclonal
预测反应	IHC: Mus musculus
应用	WB IF/ICC
推荐浓度	WB: 1:500 - 1:2000 IF/ICC: 1:50 - 1:200
理论分子量	40kDa
实测分子量	40KDa
形式	Liquid
保存条件	Store at -20°C. Avoid freeze / thaw cycles. Buffer: PBS with 0.01% thiomersal,50% glycerol,pH7.3.
偶联物	Unconjugated
阳性对照	
细胞定位	endoplasmic reticulum
纯化	Affinity purification

抗原信息

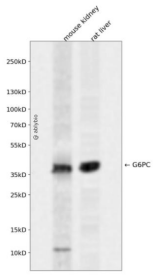
抗原信息	Recombinant fusion protein containing a sequence corresponding to amino acids 1-112 of mouse G6PC (NP_032087.2).
序列	MEEGMNILHDFGIQSTRYLQVNYQDSQDWFILVSVIADLRNAFYVLFPIWFHLKETVGINLLWVAVVGDWFNLVFKWILFGQRPYWWVLDTDYYSNSSVPIIKQFPVT CETG

靶点信息

研究背景	The enzyme encoded by this gene is a multisubunit integral membrane protein of the endoplasmic reticulum that is composed of a catalytic subunit and transporters for glucose-6-phosphate, inorganic phosphate, and glucose. This gene is one of three glucose-6-phosphatase catalytic-subunit-encoding genes in mouse. Glucose-6-phosphatase catalyzes the hydrolysis of D-glucose 6-phosphate to D-glucose and orthophosphate and is a key enzyme in glucose homeostasis, functioning in gluconeogenesis and glycogenolysis. Mutations in this gene cause glycogen storage disease type I (GSD1).
------	---

基因ID	14377
基因名	
Swiss	P35576
别名	G6pt; G6Pase; AW107337; Glc-6-Pase

产品验证



Western blot analysis of G6PC expressed in mouse kidney, rat liver using G6PC Rabbit pAb at 1:1000. Secondary antibody: HRP Goat Anti-Rabbit IgG (H+L) at 1:5000. Lysates/proteins: 30ug per lane. Blocking buffer: 5% non-fat dry milk in TBST. Detection: ECL Enhanced Kit. Exposure time: 120s.

实验步骤

访问官网浏览详情: www.ablybio.cn