

CLEC4E Rabbit pAb

货号: **AYP14738**

产品信息

反应	Mouse,Rat
宿主	Rabbit
克隆性	Polyclonal
预测反应	WB: Mus musculus
应用	WB
推荐浓度	WB: 1:500 - 1:1000
理论分子量	25kDa
实测分子量	27KDa
形式	Liquid
保存条件	Store at -20°C. Avoid freeze / thaw cycles. Buffer: PBS with 0.01% thiomersal,50% glycerol,pH7.3.
偶联物	Unconjugated
阳性对照	Mouse spleen,Rat spleen
细胞定位	cell projection,external side of plasma membrane,phagocytic cup,plasma membrane
纯化	Affinity purification

抗原信息

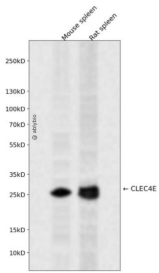
抗原信息	Recombinant fusion protein containing a sequence corresponding to amino acids 120-200 of human CLEC4E (NP_055173.1).
序列	SQEEQEFLSYKPKMREFFIGLSDQVVEGQWQWVDGTPLTKSLFWDVGEPNNIATLEDCATMRDSSNPRQNWNDVT CFLN

靶点信息

研究背景	This gene encodes a member of the C-type lectin/C-type lectin-like domain (CTL/CTLD) superfamily. Members of this family share a common protein fold and have diverse functions, such as cell adhesion, cell-cell signaling, glycoprotein turnover, and roles in inflammation and immune response. The encoded type II transmembrane protein is a downstream target of CCAAT/enhancer binding protein (C/EBP), beta (CEBPB) and may play a role in inflammation. Alternative splice variants have been described but their full-length sequence has not been determined. This gene is closely linked to other CTL/CTLD superfamily members on chromosome 12p13 in the natural killer gene complex region.
------	---

基因ID	26253
基因名	CLEC4E
Swiss	Q9ULY5
别名	MINCLE; CLECSF9

产品验证



Western blot analysis of CLEC4E expressed in Mouse spleen, Rat spleen using CLEC4E Rabbit pAb at 1:1000. Secondary antibody: HRP Goat Anti-Rabbit IgG (H+L) at 1:5000. Lysates/proteins: 30ug per lane. Blocking buffer: 5% non-fat dry milk in TBST. Detection: ECL Enhanced Kit. Exposure time: 120s.

实验步骤

访问官网浏览详情: www.ablybio.cn