

# KMT2B Rabbit pAb

货号: **AYP14735**

## 产品信息

反应	Human,Mouse,Rat
宿主	Rabbit
克隆性	Polyclonal
预测反应	<b>WB:</b> Mus musculus
应用	<a href="#">WB</a>
推荐浓度	<b>WB:</b> 1:500 - 1:1000
理论分子量	
实测分子量	320KDa
形式	Liquid
保存条件	Store at -20°C. Avoid freeze / thaw cycles. Buffer: PBS with 0.01% thiomersal,50% glycerol,pH7.3.
偶联物	Unconjugated
阳性对照	A-549,F9,Rat thymus
细胞定位	histone methyltransferase complex,nucleoplasm,nucleus
纯化	Affinity purification

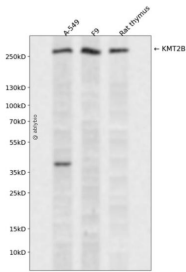
## 抗原信息

抗原信息	Recombinant fusion protein containing a sequence corresponding to amino acids 1370-1570 of human KMT2B (NP_055542.1).
序列	GLSDEDYEILSGLPDSVLYTCGPCAGAAQPRWREALSGALQGGLRQVLQGLLSSKVVGPLLLCTQCGPDGKQLHPGPCGLQAVSQRFEFGHYKSVHSFMEDMVGILMRHSEEGETPDRRAGGQMKGLLLKLLSAFGWFDHDPKYWRRSTRLPNGVLPNAVLPPSLDHVYAQWRQQEPETPESGQPPGDPSAAFQGDPA

## 靶点信息

研究背景	This gene encodes a protein which contains multiple domains including a CXXC zinc finger, three PHD zinc fingers, two FY-rich domains, and a SET (suppressor of variegation, enhancer of zeste, and trithorax) domain. The SET domain is a conserved C-terminal domain that characterizes proteins of the MLL (mixed-lineage leukemia) family. This gene is ubiquitously expressed in adult tissues. It is also amplified in solid tumor cell lines, and may be involved in human cancer. Two alternatively spliced transcript variants encoding distinct isoforms have been reported for this gene, however, the full length nature of the shorter transcript is not known. [provided by RefSeq, Jul 2008]
基因ID	9757
基因名	KMT2B
Swiss	Q9UMN6
别名	CXXC10; DYT28; HRX2; MLL1B; MLL2; MLL4; TRX2; WBP-7; WBP7

## 产品验证



Western blot analysis of KMT2B expressed in A-549, F9, Rat thymus using KMT2B Rabbit pAb at 1:1000. Secondary antibody: HRP Goat Anti-Rabbit IgG (H+L) at 1:5000. Lysates/proteins: 30ug per lane. Blocking buffer: 5% non-fat dry milk in TBST. Detection: ECL Enhanced Kit. Exposure time: 120s.

## 实验步骤

访问官网浏览详情: [www.ablybio.cn](http://www.ablybio.cn)