

# SARS-CoV-2 Spike Rabbit pAb

货号: **AYP14734**

## 产品信息

反应	SARS-CoV-2
宿主	Rabbit
克隆性	Polyclonal
预测反应	<b>IF:</b> Homo sapiens
应用	<a href="#">DB</a> <a href="#">WB</a> <a href="#">IF/ICC</a> <a href="#">IP</a>
推荐浓度	<b>DB:</b> 1:500 - 1:2000 <b>WB:</b> 1:500 - 1:1000 <b>IF/ICC:</b> 1:50 - 1:200 <b>IP:</b> 1:500 - 1:1000
理论分子量	
实测分子量	110KDa/180KDa
形式	Liquid
保存条件	Store at -20°C. Avoid freeze / thaw cycles. Buffer: PBS with 0.05% proclin300,50% glycerol,pH7.3.
偶联物	Unconjugated
阳性对照	293T
细胞定位	
纯化	Affinity purification

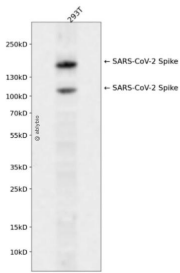
## 抗原信息

抗原信息	A synthetic peptide corresponding to a sequence within amino acids 600-700 of coronavirus Spike (YP_009724390.1).
序列	PGTNTSNQVAVLYQDVNCTEVPVAIHADQLTPTWRVYSTGSNVVFQTRAGCLIGAEHVNNSYECDIPGAGICASYQTQTNS PRRARSVASQSIIAYTMSLG

## 靶点信息

研究背景	The spike (S) glycoprotein of coronaviruses contains protrusions that will only bind to certain receptors on the host cell. The spike is essential for both host specificity and viral infectivity. The spike (S) glycoprotein of coronaviruses is known to be essential in the binding of the virus to the host cell at the advent of the infection process. It's been reported that SARS-CoV-2 (COVID-19 coronavirus, 2019-nCoV) can infect the human respiratory epithelial cells through interaction with the human ACE2 receptor. S1 mainly contains a receptor binding domain (RBD), which is responsible for recognizing the cell surface receptor. The main functions for the Spike protein are summarized as: Mediate receptor binding and membrane fusion; Defines the range of the hosts and specificity of the virus; Main component to bind with the neutralizing antibody; Key target for vaccine design; Can be transmitted between different hosts through gene recombination or mutation of the receptor binding domain (RBD), leading to a higher mortality rate.
基因ID	43740568
基因名	
Swiss	PODTC2
别名	

## 产品验证



Western blot analysis of SARS-CoV-2 Spike expressed in 293T using SARS-CoV-2 Spike Rabbit pAb at 1:1000. Secondary antibody: HRP Goat Anti-Rabbit IgG (H+L) at 1:5000. Lysates/proteins: 30ug per lane. Blocking buffer: 5% non-fat dry milk in TBST. Detection: ECL Enhanced Kit. Exposure time: 120s.

## 实验步骤

访问官网浏览详情: [www.ablybio.cn](http://www.ablybio.cn)