

KDM2A Rabbit pAb

货号: **AYP14563**

产品信息

反应	Human,Mouse
宿主	Rabbit
克隆性	Polyclonal
预测反应	WB: Homo sapiens IHC: Homo sapiens
应用	WB
推荐浓度	WB: 1:500 - 1:1000
理论分子量	69kDa/81kDa/89kDa/96kDa/132kDa
实测分子量	126KDa
形式	Liquid
保存条件	Store at -20°C. Avoid freeze / thaw cycles. Buffer: PBS with 0.05% proclin300,50% glycerol,pH7.3.
偶联物	Unconjugated
阳性对照	HeLa,BT-474,Jurkat,Mouse liver
细胞定位	Nucleus,nucleoplasm
纯化	Affinity purification

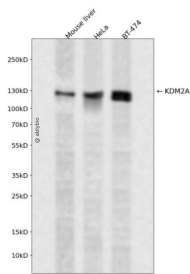
抗原信息

抗原信息	A synthetic peptide corresponding to a sequence within amino acids 1-100 of human KDM2A (NP_036440.1).
序列	MEPEEERIRYSQRLRGTMRRRYEDDGISDDEIEGKRFTDLEEKLHTNKYNANFVTFMEGKDFNVEYIQRGGLRDPLIFKNS DGLGIKMPDPDFTVNDVKM

靶点信息

研究背景	This gene encodes a member of the F-box protein family which is characterized by an approximately 40 amino acid motif, the F-box. The F-box proteins constitute one of the four subunits of ubiquitin protein ligase complex called SCFs (SKP1-cullin-F-box), which function in phosphorylation-dependent ubiquitination. The F-box proteins are divided into 3 classes: Fbws containing WD-40 domains, Fbls containing leucine-rich repeats, and Fbxs containing either different protein-protein interaction modules or no recognizable motifs. The protein encoded by this gene belongs to the Fbls class and, in addition to an F-box, contains at least six highly degenerated leucine-rich repeats. This family member plays a role in epigenetic silencing. It nucleates at CpG islands and specifically demethylates both mono- and di-methylated lysine-36 of histone H3. Alternative splicing results in multiple transcript variants.
基因ID	22992
基因名	KDM2A
Swiss	Q9Y2K7
别名	KDM2A; CXXC8; FBL11; FBL7; FBXL11; JHDM1A; LILINA; lysine demethylase 2A

产品验证



Western blot analysis of KDM2A expressed in Mouse liver, HeLa, BT-474 using KDM2A Rabbit pAb at 1:1000. Secondary antibody: HRP Goat Anti-Rabbit IgG (H+L) at 1:5000. Lysates/proteins: 30ug per lane. Blocking buffer: 5% non-fat dry milk in TBST. Detection: ECL Enhanced Kit. Exposure time: 120s.

实验步骤

访问官网浏览详情: www.ablybio.cn