

# LEMD2 Rabbit pAb

货号: **AYP14526**

## 产品信息

反应	Mouse
宿主	Rabbit
克隆性	Polyclonal
预测反应	<b>WB:</b> Mus musculus <b>IF:</b> Mus musculus
应用	<a href="#">WB</a>
推荐浓度	<b>WB:</b> 1:500 - 1:2000
理论分子量	
实测分子量	57kDa
形式	Liquid
保存条件	Store at -20°C. Avoid freeze / thaw cycles. Buffer: PBS with 0.01% thiomersal, 50% glycerol, pH 7.3.
偶联物	Unconjugated
阳性对照	mouse brain
细胞定位	cytoplasm, nuclear envelope, nuclear membrane, spindle
纯化	Affinity purification

## 抗原信息

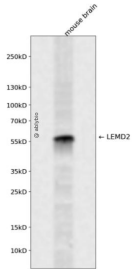
抗原信息	A synthetic peptide corresponding to a sequence within amino acids 200-300 of human LEMD2 (NP_851853.1).
序列	PEVGRRLERWLSRLLLWASLGLLLVFLGILWVKMGKPSAPQEAEDNMKLLPVDCERKTDFCQAKQKAALLELLHELYNFLAIQAGNFECGNPENLKSCKI

## 靶点信息

研究背景	This gene encodes a LEM domain-containing transmembrane protein of the inner nuclear membrane. The protein is involved in nuclear structure organization and plays a role in cell signaling and differentiation. Mutations in this gene result in Cataract 46, juvenile-onset. Multiple transcript variants have been found for this gene. [provided by RefSeq, Feb 2017]
基因ID	221496

基因名	LEMD2
Swiss	Q8NC56
别名	CTRCT42;NET25;dj482C21.1;LEMD2

## 产品验证



Western blot analysis of LEMD2 expressed in mouse brain using LEMD2 Rabbit pAb at 1:1000. Secondary antibody: HRP Goat Anti-Rabbit IgG (H+L) at 1:5000. Lysates/proteins: 30ug per lane. Blocking buffer: 5% non-fat dry milk in TBST. Detection: ECL Enhanced Kit. Exposure time: 120s.

## 实验步骤

访问官网浏览详情: [www.ablybio.cn](http://www.ablybio.cn)