

PIGU Rabbit pAb

货号: **AYP14525**

产品信息

反应	Human,Mouse,Rat
宿主	Rabbit
克隆性	Polyclonal
预测反应	IHC: Homo sapiens
应用	WB IHC IF/ICC
推荐浓度	WB: 1:500 - 1:2000 IHC: 1:50 - 1:200 IF/ICC: 1:50 - 1:200
理论分子量	
实测分子量	50kDa
形式	Liquid
保存条件	Store at -20°C. Avoid freeze / thaw cycles. Buffer: PBS with 0.01% thiomersal,50% glycerol,pH7.3.
偶联物	Unconjugated
阳性对照	U-87MG,293T,Rat brain
细胞定位	plasma membrane
纯化	Affinity purification

抗原信息

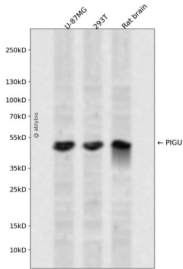
抗原信息	A synthetic peptide corresponding to a sequence within amino acids 1-100 of human PIGU (NP_536724.1)
序列	MAAPLVLVLVVAVTVRAALFRSSLAEFISERVEVVSPLSSWKRVEGLSLLDLGVSPYSGAVFHETPLIILFHFLLIDYAEVLF MITDALTAIALYFAIQ

靶点信息

研究背景	The protein encoded by this gene shares similarity with Saccharomyces cerevisiae Cdc91, a predicted integral membrane protein that may function in cell division control. The protein encoded by this gene is the fifth subunit of GPI transamidase that attaches GPI-anchors to proteins. [provided by RefSeq, Jul 2008]
基因ID	128869

基因名	PIGU
Swiss	Q9H490
别名	CDC91L1;GAB1;PIGU

产品验证



Western blot analysis of PIGU expressed in U-87MG,293T,Rat brain using PIGU Rabbit pAb at 1:1000. Secondary antibody: HRP Goat Anti-Rabbit IgG (H+L) at 1:5000. Lysates/proteins: 30ug per lane. Blocking buffer: 5% non-fat dry milk in TBST. Detection: ECL Enhanced Kit. Exposure time: 120s.

实验步骤

访问官网浏览详情: www.ablybio.cn