

— ABLYBIO, Help Your Research



SH2D2A Rabbit pAb

货号: **AYP14521**

产品信息

反应	Human,Mouse,Rat
宿主	Rabbit
克隆性	Polyclonal
预测反应	RT-PCR: Mus musculus WB: Mus musculus
应用	WB
推荐浓度	WB: 1:500 - 1:1000
理论分子量	39kDa/40kDa/42kDa/44kDa
实测分子量	41kDa/43kDa
形式	Liquid
保存条件	Store at -20°C. Avoid freeze / thaw cycles. Buffer: PBS with 0.01% thiomersal,50% glycerol,pH7.3.
偶联物	Unconjugated
阳性对照	U-87MG,K-562,Mouse spleen,Rat thymus
细胞定位	cytoplasm,cytosol
纯化	Affinity purification

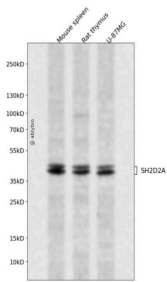
抗原信息

抗原信息	A synthetic peptide corresponding to a sequence within amino acids 250-350 of human SH2D2A (NP_003966.2).
------	---

靶点信息

研究背景	This gene encodes an adaptor protein thought to function in T-cell signal transduction. A related protein in mouse is responsible for the activation of lymphocyte-specific protein-tyrosine kinase and functions in downstream signaling. Alternative splicing results in multiple transcript variants.
基因ID	9047
基因名	SH2D2A
Swiss	Q9NP31 (https://www.uniprot.org/uniprotkb/Q9NP31/entry)
别名	F2771,SCAP,TSAD,VRAP,SH2D2A,SH2D2A Rabbit pAb,SH2 domain-containing adapter protein,T cell-specific adapter protein,VEGF receptor-associated protein

产品验证



Western blot analysis of SH2D2A expressed in Mouse spleen,Rat thymus,U-87MG using SH2D2A Rabbit pAb at 1:1000. Secondary antibody: HRP Goat Anti-Rabbit IgG (H+L) at 1:5000. Lysates/proteins: 30ug per lane. Blocking buffer: 5% non-fat dry milk in TBST. Detection: ECL Enhanced Kit. Exposure time: 120s.

实验步骤

访问官网浏览详情: www.ablybio.cn (<https://www.ablybio.cn/>www.ablybio.cn)