

KIF22 Rabbit pAb

货号: **AYP14513**

产品信息

反应	Human,Mouse
宿主	Rabbit
克隆性	Polyclonal
预测反应	IF: Homo sapiens
应用	WB IHC IF/ICC
推荐浓度	WB: 1:200 - 1:2000 IHC: 1:50 - 1:200 IF/ICC: 1:50 - 1:200
理论分子量	66kDa/73kDa
实测分子量	73KDa
形式	Liquid
保存条件	Store at -20°C. Avoid freeze / thaw cycles. Buffer: PBS with 0.01% thiomersal,50% glycerol,pH7.3.
偶联物	Unconjugated
阳性对照	293T
细胞定位	Cytoplasm,Nucleus,cytoskeleton
纯化	Affinity purification

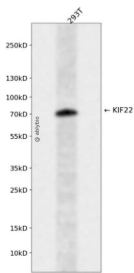
抗原信息

抗原信息	Recombinant fusion protein containing a sequence corresponding to amino acids 456-665 of human KIF22 (NP_015556.1).
序列	QGAPLLSTPKRERMVLMKTVEEKDLEIERLTKQKELEAKMLAQKAEKENHCPTMLRPLSHRTVTGAKPLKKAVVMPLQLIQEQAAASPNAEIHILKNKGRKRKLESLDALEPEEKAEDCWELQISPELLAHGRQKILDLLNEGSARDLRSLSLQIRIGPKKAQLIVGWRELHGPFSSQVEDLERVEGITGKQMESFLKANILGLAAGQRCGAS

靶点信息

研究背景	The protein encoded by this gene is a member of the kinesin-like protein family. The family members are microtubule-dependent molecular motors that transport organelles within cells and move chromosomes during cell division. The C-terminal half of this protein has been shown to bind DNA. Studies with the <i>Xenopus</i> homolog suggests its essential role in metaphase chromosome alignment and maintenance. Alternatively spliced transcript variants encoding different isoforms have been found for this gene.
基因ID	3835
基因名	KIF22
Swiss	Q14807
别名	KIF22;A-328A3.2;KID;KNSL4;OBP;OBP-1;OBP-2;SEMDJL2

产品验证



Western blot analysis of KIF22 expressed in 293T using KIF22 Rabbit pAb at 1:1000. Secondary antibody: HRP Goat Anti-Rabbit IgG (H+L) at 1:5000. Lysates/proteins: 30ug per lane. Blocking buffer: 5% non-fat dry milk in TBST. Detection: ECL Enhanced Kit. Exposure time: 120s.

实验步骤

访问官网浏览详情: www.ablybio.cn