

Pan Mono-Methyl lysine Rabbit pAb

货号: **AYP14488**

产品信息

反应	Human,Mouse,Rat
宿主	Rabbit
克隆性	Polyclonal
预测反应	WB: Mus musculus
应用	WB IP ChIP
推荐浓度	WB: 1:500 - 1:1000 IP: 1:500 - 1:1000 ChIP: 1:500 - 1:1000
理论分子量	
实测分子量	17-90kDa
形式	Liquid
保存条件	Store at -20°C. Avoid freeze / thaw cycles. Buffer: PBS with 0.01% thiomersal,50% glycerol,pH7.3.
偶联物	Unconjugated
阳性对照	HeLa,MCF7,NIH/3T3,C6,Mouse liver,Rat liver
细胞定位	
纯化	Affinity purification

抗原信息

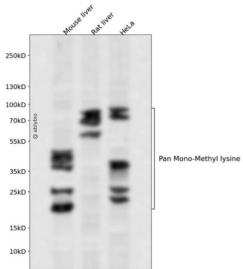
抗原信息	A synthetic peptide corresponding to a sequence containing monomethylated K.
序列	

靶点信息

研究背景	Methylation of lysine residues is a common regulatory post-translational modification (PTM) that results in the mono-, di-, or tri-methylation of lysine at ϵ -amine groups by protein lysine methyltransferases (PKMTs).
基因ID	
基因名	

Swiss	
别名	

产品验证



Western blot analysis of Pan Mono-Methyl lysine expressed in Mouse liver,Rat liver,HeLa using Pan Mono-Methyl lysine Rabbit pAb at 1:1000. Secondary antibody: HRP Goat Anti-Rabbit IgG (H+L) at 1:5000. Lysates/proteins: 30ug per lane. Blocking buffer: 5% non-fat dry milk in TBST. Detection: ECL Enhanced Kit. Exposure time: 120s.

实验步骤

访问官网浏览详情: www.ablybio.cn