

# Phospho-(Ser/Thr) ATM/ATR Substrate Rabbit pAb

货号: **AYP14468**

## 产品信息

反应	Human,Mouse,Rat
宿主	Rabbit
克隆性	Polyclonal
预测反应	<b>WB:</b> Mus musculus
应用	<a href="#">WB</a>
推荐浓度	<b>WB:</b> 1:500 - 1:2000
理论分子量	
实测分子量	38-68KDa
形式	Liquid
保存条件	Store at -20°C. Avoid freeze / thaw cycles. Buffer: PBS with 0.01% thiomersal,50% glycerol,pH7.3.
偶联物	Unconjugated
阳性对照	Jurkat,NIH/3T3,C6
细胞定位	
纯化	Affinity purification

## 抗原信息

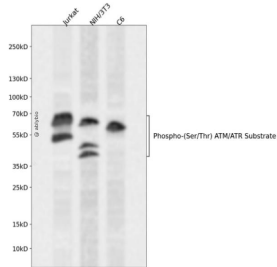
抗原信息	A synthetic peptide corresponding to a sequence containing phosphorylated S & T.
序列	

## 靶点信息

研究背景	The functionally related ATM (ataxia telangiectasia-mutated) and ATR (ATM-Rad3-related) protein kinases are critical regulators of DNA damage responses in mammalian cells. ATM and ATR share highly overlapping substrate specificities and show a strong preference for the phosphorylation of Serine (S) or Threonine (T) residues followed by Gln. It also called SQ or TQ consensus sites.
基因ID	

基因名	
Swiss	
别名	

## 产品验证



Western blot analysis of Phospho-(Ser/Thr) ATM/ATR Substrate expressed in Jurkat,NIH/3T3,C6 using Phospho-(Ser/Thr) ATM/ATR Substrate Rabbit pAb at 1:1000. Secondary antibody: HRP Go at Anti-Rabbit IgG (H+L) at 1:5000. Lysates/proteins: 30ug per lane. Blocking buffer: 5% non-fat dry milk in TBST. Detection: ECL Enhanced Kit. Exposure time: 120s.

## 实验步骤

访问官网浏览详情: [www.ablybio.cn](http://www.ablybio.cn)