

# GPR35 Rabbit pAb

货号: **AYP14440**

## 产品信息

反应	Mouse
宿主	Rabbit
克隆性	Polyclonal
预测反应	<b>WB:</b> Mus musculus
应用	<a href="#">WB</a>
推荐浓度	<b>WB:</b> 1:500 - 1:2000
理论分子量	34kDa
实测分子量	34kDa
形式	Liquid
保存条件	Store at -20°C. Avoid freeze / thaw cycles. Buffer: PBS with 0.01% thiomersal, 50% glycerol, pH7.3.
偶联物	Unconjugated
阳性对照	Mouse brain, mouse stomach, mouse liver
细胞定位	plasma membrane
纯化	Affinity purification

## 抗原信息

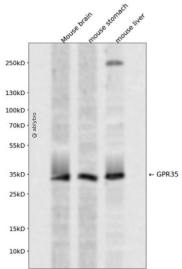
抗原信息	A synthetic peptide corresponding to a sequence within amino acids 50-150 of human GPR35 (NP_005292.2).
序列	QQWTETRIYMTNLAVADLCLLCTLPFVLHSLRDTSDTPLCQLSQGIYLTNRYMSISLVTAIAVDRYVAVRHPLRARGLRSPRQAAAVCAVLWVLVIGSLVA

## 靶点信息

研究背景	GPR35 (G protein-coupled receptor 35) is a protein-coding gene. Diseases associated with GPR35 include primary sclerosing cholangitis. GO annotations related to this gene include G-protein coupled receptor activity. An important paralog of this gene is GPR18.
基因ID	2859

基因名	GPR35
Swiss	Q9HC97
别名	GPR35

## 产品验证



Western blot analysis of GPR35 expressed in Mouse brain,mouse stomach,mouse liver using GPR35 Rab bit pAb at 1:1000. Secondary antibody: HRP Goat Anti-Rabbit IgG (H+L) at 1:5000. Lysates/proteins: 30 ug per lane. Blocking buffer: 5% non-fat dry milk in TBST. Detection: ECL Enhanced Kit. Exposure time: 120s.

## 实验步骤

访问官网浏览详情: [www.ablybio.cn](http://www.ablybio.cn)