

MON1A Rabbit pAb

货号: **AYP14439**

产品信息

反应	Human
宿主	Rabbit
克隆性	Polyclonal
预测反应	WB: Mus musculus
应用	WB
推荐浓度	WB: 1:500 - 1:2000
理论分子量	73kDa
实测分子量	73kDa
形式	Liquid
保存条件	Store at -20°C. Avoid freeze / thaw cycles. Buffer: PBS with 0.02% sodium azide, 50% glycerol, pH7.3.
偶联物	Unconjugated
阳性对照	K-562
细胞定位	cytosol, Mon1-Ccz1 complex
纯化	Affinity purification

抗原信息

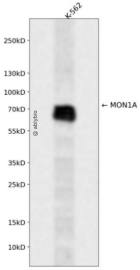
抗原信息	Recombinant protein of human MON1A.
序列	

靶点信息

研究背景	Plays an important role in membrane trafficking through the secretory apparatus. Not involved in endocytic trafficking to lysosomes (By similarity). Acts in concert with CCZ1, as a guanine exchange factor (GEF for RAB7, promotes the exchange of GDP to GTP, converting it from an inactive GDP-bound form into an active GTP-bound form.
基因ID	84315
基因名	MON1A

Swiss	Q86VX9
别名	SAND1;MON1A

产品验证



Western blot analysis of MON1A expressed in K-562 using MON1A Rabbit pAb at 1:1000. Secondary antibody: HRP Goat Anti-Rabbit IgG (H+L) at 1:5000. Lysates/proteins: 30ug per lane. Blocking buffer: 5% non-fat dry milk in TBST. Detection: ECL Enhanced Kit. Exposure time: 120s.

实验步骤

访问官网浏览详情: www.ablybio.cn