

ITGBL1 Rabbit pAb

货号: **AYP14424**

产品信息

反应	Human,Mouse,Rat
宿主	Rabbit
克隆性	Polyclonal
预测反应	WB: Homo sapiens
应用	WB
推荐浓度	WB: 1:500 - 1:2000
理论分子量	38kDa/43kDa/53kDa
实测分子量	54kDa
形式	Liquid
保存条件	Store at -20°C. Avoid freeze / thaw cycles. Buffer: PBS with 0.01% thiomersal,50% glycerol,pH7.3.
偶联物	Unconjugated
阳性对照	NIH/3T3,Mouse spleen,Rat spleen
细胞定位	extracellular region,focal adhesion,plasma membrane
纯化	Affinity purification

抗原信息

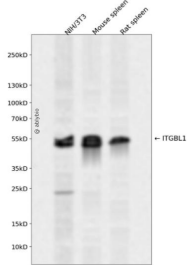
抗原信息	A synthetic peptide corresponding to a sequence within amino acids 200-300 of human ITGBL1 (NP_004782.1).
序列	CYCGNCYCKAGWHGDKCEFQCDITPWESKRRCTSPDGKICSNRGTCVCGECTCHDVDPTGDWGDHGDTCEDERDCRAVYDRYSDDFCSGHGQCNCGRCD

靶点信息

研究背景	This gene encodes a beta integrin-related protein that is a member of the EGF-like protein family. The encoded protein contains integrin-like cysteine-rich repeats. Alternative splicing results in multiple transcript variants. [provided by RefSeq, Nov 2012]
基因ID	9358

基因名	ITGBL1
Swiss	O95965
别名	ITGBL1;OSCP;TIED

产品验证



Western blot analysis of ITGBL1 expressed in NIH/3T3, Mouse spleen, Rat spleen using ITGBL1 Rabbit pAb at 1:1000. Secondary antibody: HRP Goat Anti-Rabbit IgG (H+L) at 1:5000. Lysates/proteins: 30ug per lane. Blocking buffer: 5% non-fat dry milk in TBST. Detection: ECL Enhanced Kit. Exposure time: 120s.

实验步骤

访问官网浏览详情: www.ablybio.cn