

LY6D Rabbit pAb

货号: **AYP14423**

产品信息

反应	Human,Mouse
宿主	Rabbit
克隆性	Polyclonal
预测反应	WB: Mus musculus
应用	WB
推荐浓度	WB: 1:500 - 1:1000
理论分子量	
实测分子量	16KDa
形式	Liquid
保存条件	Store at -20°C. Avoid freeze / thaw cycles. Buffer: PBS with 0.01% thiomersal,50% glycerol,pH7.3.
偶联物	Unconjugated
阳性对照	Mouse spleen,Mouse thymus
细胞定位	cell surface,extracellular region,plasma membrane
纯化	Affinity purification

抗原信息

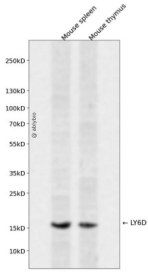
抗原信息	Recombinant fusion protein containing a sequence corresponding to amino acids 25-95 of human LY6D (NP_003686.1).
序列	VCTSSSNCKHSVWCPASSRFCKTTNTVEPLRGNLVKKDCAESCTPSYTLQGQVSSGTSTQCCQEDLCNEK

靶点信息

研究背景	May act as a specification marker at earliest stage specification of lymphocytes between B- and T-cell development. Marks the earliest stage of B-cell specification.
基因ID	8581
基因名	LY6D

Swiss	Q14210
别名	E48;Ly-6D;LY6D

产品验证



Western blot analysis of LY6D expressed in Mouse spleen, Mouse thymus using LY6D Rabbit pAb at 1:1000. Secondary antibody: HRP Goat Anti-Rabbit IgG (H+L) at 1:5000. Lysates/proteins: 30ug per lane. Blocking buffer: 5% non-fat dry milk in TBST. Detection: ECL Enhanced Kit. Exposure time: 120s.

实验步骤

访问官网浏览详情: www.ablybio.cn