

HAUS1 Rabbit pAb

货号: **AYP14391**

产品信息

反应	Human,Mouse,Rat
宿主	Rabbit
克隆性	Polyclonal
预测反应	WB: Homo sapiens
应用	WB
推荐浓度	WB: 1:500 - 1:2000
理论分子量	32kDa
实测分子量	32kDa
形式	Liquid
保存条件	Store at -20°C. Avoid freeze / thaw cycles. Buffer: PBS with 0.01% thiomersal,50% glycerol,pH7.3.
偶联物	Unconjugated
阳性对照	human skeletal muscle tissue, HL-60 cells, HeLa cells, MOLT-4 cells
细胞定位	centrosome,cytosol,spindle pole
纯化	Affinity purification

抗原信息

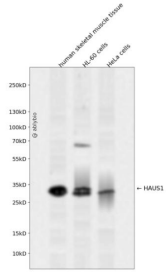
抗原信息	Recombinant fusion protein containing a sequence corresponding to amino acids 120-250 of human HAUS1 (NP_612452.1).
序列	NDLTSDLFRTKSKSEEIKIELEKLEKNLTATLVLEKCLQEDVKKAEHLSTERAKVDNRRQNMDFLKAKSEEFRFGIKAAEEQLSARGMDASLSHQSLVALSEKLARLKQQTIPKKKLESYLDLMPNPSL

靶点信息

研究背景	HAUS1 is 1 of 8 subunits of the 390-kD human augmin complex, or HAUS complex. The augmin complex was first identified in Drosophila, and its name comes from the Latin verb 'augmentare,' meaning 'to increase.' The augmin complex is a microtubule-binding complex involved in microtubule generation within the mitotic spindle and is vital to mitotic spindle assembly (Goshima et al., 2008 [PubMed 18443220]; Uehara et al., 2009 [PubMed 19369198]).
基因ID	115106

基因名	HAUS1
Swiss	Q96CS2
别名	HAUS1;CCDC5;HEI-C;HEIC;HsT1461

产品验证



Western blot analysis of HAUS1 expressed in human skeletal muscle tissue,HL-60 cells,HeLa cells using H AUS1 Rabbit pAb at 1:1000. Secondary antibody: HRP Goat Anti-Rabbit IgG (H+L) at 1:5000. Lysates/prot eins: 30ug per lane. Blocking buffer: 5% non-fat dry milk in TBST. Detection: ECL Enhanced Kit. Exposure time: 120s.

实验步骤

访问官网浏览详情: www.ablybio.cn