

TAS1R2 Rabbit pAb

货号: **AYP14388**

产品信息

反应	Human
宿主	Rabbit
克隆性	Polyclonal
预测反应	WB: Rattus norvegicus
应用	WB
推荐浓度	WB: 1:500 - 1:2000
理论分子量	
实测分子量	95kDa
形式	Liquid
保存条件	Store at -20°C. Avoid freeze / thaw cycles. Buffer: PBS with 0.01% thiomersal, 50% glycerol, pH 7.3.
偶联物	Unconjugated
阳性对照	MCF7, HeLa, 293T
细胞定位	plasma membrane
纯化	Affinity purification

抗原信息

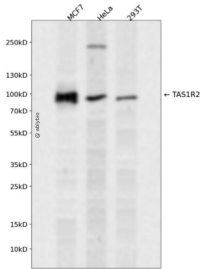
抗原信息	A synthetic peptide corresponding to a sequence within amino acids 450-550 of human TAS1R2 (NP_689418.2).
序列	IVQWQWDRSQNPQSVASYPLQRQLKNIQDISWHTINNTIPMSMCSKRCQSGQKKKPVGIHVCCFECIDCLPGTFLNHT EDEYECQACPNNEWSYQSETS

靶点信息

研究背景	Putative taste receptor. TAS1R2/TAS1R3 recognizes diverse natural and synthetic sweeteners.
基因ID	80834
基因名	TAS1R2

Swiss	Q8TE23
别名	TAS1R2;GPR71;T1R2;TR2

产品验证



Western blot analysis of TAS1R2 expressed in MCF7, HeLa, 293T using TAS1R2 Rabbit pAb at 1:1000. Secondary antibody: HRP Goat Anti-Rabbit IgG (H+L) at 1:5000. Lysates/proteins: 30ug per lane. Blocking buffer: 5% non-fat dry milk in TBST. Detection: ECL Enhanced Kit. Exposure time: 120s.

实验步骤

访问官网浏览详情: www.ablybio.cn