

CHD7 Rabbit pAb

货号: **AYP14386**

产品信息

反应	Human
宿主	Rabbit
克隆性	Polyclonal
预测反应	WB: Homo sapiens
应用	WB
推荐浓度	WB: 1:500 - 1:2000
理论分子量	335kDa
实测分子量	335kDa
形式	Liquid
保存条件	Store at -20°C. Avoid freeze / thaw cycles. Buffer: PBS with 0.01% thiomersal, 50% glycerol, pH7.3.
偶联物	Unconjugated
阳性对照	HeLa
细胞定位	nucleolus, nucleoplasm, nucleus
纯化	Affinity purification

抗原信息

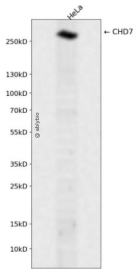
抗原信息	Recombinant fusion protein containing a sequence corresponding to amino acids 1-300 of human CHD7 (NP_060250.2).
序列	MADPGMMSLFGEDGNIFSEGLEGLGECGYPENPVNPMGQQMPIDQGFASLQPSLHHPSTNQNTKLTHFDHYNQYEQ QKMLMDQPNRMSNTPGNGLASPHSQYHTPPVQVPHGGSGGGQMGVYPGMQNERHGQSFVDSSSMWGPRAVQ VPDQIRAPYQQQPQPAPSGPPAQGHPOHMQQMGSYMARGDFSMQQHGQPQRMSQFSQGGQEGLNQGNP FIATSGPGHLSHVPQQSPMAPSLRHSVQQFHHPSTALHGESVAHSPRFSPNPPQQGAVRPQTLNFSRSRSTVP

靶点信息

研究背景	This gene encodes a protein that contains several helicase family domains. Mutations in this gene have been found in some patients with the CHARGE syndrome. Two transcript variants encoding different isoforms have been found for this gene.
基因ID	55636

基因名	CHD7
Swiss	Q9P2D1
别名	CHD7;CRG;HH5;IS3;KAL5

产品验证



Western blot analysis of CHD7 expressed in HeLa using CHD7 Rabbit pAb at 1:1000. Secondary antibody: HRP Goat Anti-Rabbit IgG (H+L) at 1:5000. Lysates/proteins: 30ug per lane. Blocking buffer: 5% non-fat dry milk in TBST. Detection: ECL Enhanced Kit. Exposure time: 120s.

实验步骤

访问官网浏览详情: www.ablybio.cn