

AMOTL2 Rabbit pAb

货号: **AYP14356**

产品信息

反应	Human,Mouse
宿主	Rabbit
克隆性	Polyclonal
预测反应	WB: Homo sapiens
应用	WB IHC IF/ICC
推荐浓度	WB: 1:100 - 1:500 IHC: 1:50 - 1:100 IF/ICC: 1:50 - 1:100
理论分子量	60kDa/86kDa
实测分子量	102KDa
形式	Liquid
保存条件	Store at -20°C. Avoid freeze / thaw cycles. Buffer: PBS with 0.05% proclin300,50% glycerol,pH7.3.
偶联物	Unconjugated
阳性对照	bewo
细胞定位	bicellular tight junction,cytoplasmic vesicle,cytosol,plasma membrane,recycling endosome
纯化	Affinity purification

抗原信息

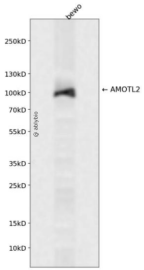
抗原信息	Recombinant fusion protein containing a sequence corresponding to amino acids 638-837 of human AMOTL2 (NP_001265612.1).
序列	RQFAMDAAATAAAQRDRTLIRHSPQPSPSSSFNEGLLTGGHRHQEMESRLKVLHAQILEKDAVIKVLQQRSSRRDPGKAIQ GSLRPAKSVPSVFAAAAAGTQGWQGLSSSERQTADAPARLTTDRAPTEEPVVTAPPAAHAKHGSRDGGSTQTEGPPDSTS TCLPPEPDSLLGCSSSQRAASLDSVATSRVQDLSDMVEILI

靶点信息

研究背景	Angiomotin is a protein that binds angiotatin, a circulating inhibitor of the formation of new blood vessels (angiogenesis). Angiomotin mediates angiotatin inhibition of endothelial cell migration and tube formation in vitro. The protein encoded by this gene is related to angiomotin and is a member of the motin protein family. Alternative splicing results in multiple transcript variants of this gene.
------	---

基因ID	51421
基因名	AMOTL2
Swiss	Q9Y2J4
别名	AMOTL2;LCCP

产品验证



Western blot analysis of AMOTL2 expressed in bewo using AMOTL2 Rabbit pAb at 1:1000. Secondary antibody: HRP Goat Anti-Rabbit IgG (H+L) at 1:5000. Lysates/proteins: 30ug per lane. Blocking buffer: 5% non-fat dry milk in TBST. Detection: ECL Enhanced Kit. Exposure time: 120s.

实验步骤

访问官网浏览详情: www.ablybio.cn