

— ABLYBIO, Help Your Research



TET2 Rabbit pAb

货号: **AYP14351**

产品信息

反应	Human,Mouse
宿主	Rabbit
克隆性	Polyclonal
预测反应	WB: Homo sapiens
应用	WB
推荐浓度	WB: 1:100 - 1:500
理论分子量	130kDa/133kDa/223kDa
实测分子量	280KDa
形式	Liquid
保存条件	Store at -20°C. Avoid freeze / thaw cycles. Buffer: PBS with 0.01% thiomersal,50% glycerol,pH7.3.
偶联物	Unconjugated
阳性对照	SH-SY5Y,293T
细胞定位	nucleus
纯化	Affinity purification

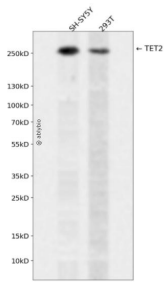
抗原信息

抗原信息	Recombinant fusion protein containing a sequence corresponding to amino acids 1-350 of TET2 (NP_001120680.1).
------	---------------------------------------------------------------------------------------------------------------

靶点信息

研究背景	The protein encoded by this gene is a methylcytosine dioxygenase that catalyzes the conversion of methylcytosine to 5-hydroxymethylcytosine. The encoded protein is involved in myelopoiesis, and defects in this gene have been associated with several myeloproliferative disorders. Two variants encoding different isoforms have been found for this gene.
基因ID	54790
基因名	TET2
Swiss	Q6N021 (https://www.uniprot.org/uniprotkb/Q6N021/entry)
别名	MDS,KIAA1546,TET2,TET2 Rabbit pAb

产品验证



Western blot analysis of TET2 expressed in SH-SY5Y,293T using TET2 Rabbit pAb at 1:1000. Secondary antibody: HRP Goat Anti-Rabbit IgG (H+L) at 1:5000. Lysates/proteins: 30ug per lane. Blocking buffer: 5% non-fat dry milk in TBST. Detection: ECL Enhanced Kit. Exposure time: 120s.

实验步骤

访问官网浏览详情: www.ablybio.cn (<https://www.ablybio.cn/>www.ablybio.cn)