

DDX6 Rabbit pAb

货号: **AYP14333**

产品信息

反应	Human,Mouse,Rat
宿主	Rabbit
克隆性	Polyclonal
预测反应	WB: Homo sapiens IF: Homo sapiens
应用	WB IHC IF/ICC
推荐浓度	WB: 1:500 - 1:2000 IHC: 1:50 - 1:100 IF/ICC: 1:50 - 1:100
理论分子量	54kDa
实测分子量	54kDa
形式	Liquid
保存条件	Store at -20°C. Avoid freeze / thaw cycles. Buffer: PBS with 0.01% thiomersal,50% glycerol,pH7.3.
偶联物	Unconjugated
阳性对照	HepG2,HeLa,NIH/3T3,Rat spleen
细胞定位	Cytoplasm,P-body
纯化	Affinity purification

抗原信息

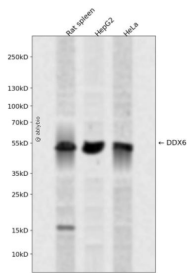
抗原信息	A synthetic peptide corresponding to a sequence within amino acids 400 to the C-terminus of human DDX 6 (NP_001244120.1).
序列	IQAVNVVINFDFPKLAETYLHRIGRSGRFGHLGLAINLITYDDRFNLKSIEEQLGTEIKPIPSNIDKSLYVAEYHSEPVEDEKP

靶点信息

研究背景	This gene encodes a member of the DEAD box protein family. The protein is an RNA helicase found in P-bodies and stress granules, and functions in translation suppression and mRNA degradation. It is required for or microRNA-induced gene silencing. Multiple alternatively spliced variants, encoding the same protein, have been identified.
------	--

基因ID	1656
基因名	DDX6
Swiss	P26196
别名	DDX6;HLR2;P54;RCK

产品验证



Western blot analysis of DDX6 expressed in Rat spleen, HepG2, HeLa using DDX6 Rabbit pAb at 1:1000. Secondary antibody: HRP Goat Anti-Rabbit IgG (H+L) at 1:5000. Lysates/proteins: 30ug per lane. Blocking buffer: 5% non-fat dry milk in TBST. Detection: ECL Enhanced Kit. Exposure time: 120s.

实验步骤

访问官网浏览详情: www.ablybio.cn