

— ABLYBIO, Help Your Research



# Phospho-EEF2K-S366 Rabbit pAb

货号: **AYP14325**

## 产品信息

|       |  |
|-------|--|
| 反应    | Human,Mouse,Rat  |
| 宿主    | Rabbit   |
| 克隆性   | Polyclonal   |
| 预测反应  | <b>WB:</b> Homo sapiens  |
| 应用    | WB   |
| 推荐浓度  | <b>WB:</b> 1:500 - 1:2000  |
| 理论分子量 | 82kDa  |
| 实测分子量 | 110kDa   |
| 形式    | Liquid   |
| 保存条件  | Store at -20°C. Avoid freeze / thaw cycles.<br>Buffer: PBS with 0.01% thiomersal,50% glycerol,pH7.3. |
| 偶联物   | Unconjugated   |
| 阳性对照  | HeLa,NIH/3T3,C6  |
| 细胞定位  | cytoplasm,cytosol,dendritic spine,glutamatergic synapse,postsynaptic density                         |
| 纯化    | Affinity purification  |

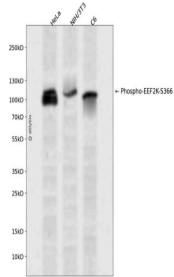
## 抗原信息

|      |  |
|------|--|
| 抗原信息 | A synthetic phosphorylated peptide around S366 of human EEF2K (NP_037434.1). |
|------|--|

## 靶点信息

|       |   |
|-------|---|
| 研究背景  | This gene encodes a highly conserved protein kinase in the calmodulin-mediated signaling pathway that links activation of cell surface receptors to cell division. This kinase is involved in the regulation of protein synthesis. It phosphorylates eukaryotic elongation factor 2 (EEF2) and thus inhibits the EEF2 function. The activity of this kinase is increased in many cancers and may be a valid target for anti-cancer treatment. |
| 基因ID  | 29904   |
| 基因名   | EEF2K   |
| Swiss | O00418 ( <a href="https://www.uniprot.org/uniprotkb/O00418/entry">https://www.uniprot.org/uniprotkb/O00418/entry</a> )  |
| 别名    | EEF2K,HSU93850,eEF-2K,Phospho-EEF2K-S366 Rabbit pAb,Calcium/calmodulin-dependent eukaryotic elongation factor 2 kinase  |

## 产品验证



Western blot analysis of Phospho-EEF2K-S366 expressed in HeLa, NIH/3T3, C6 using Phospho-EEF2K-S366 Rabbit pAb at 1:1000. Secondary antibody: HRP Goat Anti-Rabbit IgG (H+L) at 1:5000. Lysates/proteins: 30 ug per lane. Blocking buffer: 5% non-fat dry milk in TBST. Detection: ECL Enhanced Kit. Exposure time: 12 0s.

## 实验步骤

访问官网浏览详情: [www.ablybio.cn](http://www.ablybio.cn) (<https://www.ablybio.cn/www.ablybio.cn>)