

Phospho-EphA2-Y594 Rabbit pAb

货号: **AYP14321**

产品信息

反应	Human,Rat
宿主	Rabbit
克隆性	Polyclonal
预测反应	WB: Homo sapiens
应用	WB
推荐浓度	WB: 1:500 - 1:2000
理论分子量	54kDa/108kDa
实测分子量	108kDa
形式	Liquid
保存条件	Store at -20°C. Avoid freeze / thaw cycles. Buffer: PBS with 0.01% thiomersal,50% glycerol,pH7.3.
偶联物	Unconjugated
阳性对照	SH-SY5Y
细胞定位	Cell junction,Cell membrane,Cell projection,Single-pass type I membrane protein,focal adhesion,lamellipodium membrane,ruffle membrane
纯化	Affinity purification

抗原信息

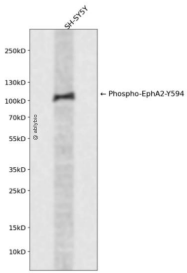
抗原信息	A synthetic phosphorylated peptide around Y594 of human EphA2 (NP_004422.2).
序列	HTYED

靶点信息

研究背景	This gene belongs to the ephrin receptor subfamily of the protein-tyrosine kinase family. EPH and EPH-related receptors have been implicated in mediating developmental events, particularly in the nervous system. Receptors in the EPH subfamily typically have a single kinase domain and an extracellular region containing a Cys-rich domain and 2 fibronectin type III repeats. The ephrin receptors are divided into 2 groups based on the similarity of their extracellular domain sequences and their affinities for binding ephrin-A and ephrin-B ligands. This gene encodes a protein that binds ephrin-A ligands. Mutations in this gene are the cause of certain genetically-related cataract disorders.
------	-----------------------------------------------------------------------------------------------------------------------------------------------------------------------------------------------------------------------------------------------------------------------------------------------------------------------------------------------------------------------------------------------------------------------------------------------------------------------------------------------------------------------------------------------------------------------------------------------------------------------------------------------------------------------------------------------------------------------

基因ID	1969
基因名	EPA2
Swiss	P29317
别名	ARCC2;CTPA;CTPP1;CTRCT6;ECK;EPA2

产品验证



Western blot analysis of Phospho-EphA2-Y594 expressed in SH-SY5Y using Phospho-EphA2-Y594 Rabbit pAb at 1:1000. Secondary antibody: HRP Goat Anti-Rabbit IgG (H+L) at 1:5000. Lysates/proteins: 30ug per lane. Blocking buffer: 5% non-fat dry milk in TBST. Detection: ECL Enhanced Kit. Exposure time: 12 0s.

实验步骤

访问官网浏览详情: www.ablybio.cn