

— ABLYBIO, Help Your Research



# Phospho-PPP1CA-T320 Rabbit pAb

货号: **AYP14319**

## 产品信息

反应	Human,Mouse,Rat
宿主	Rabbit
克隆性	Polyclonal
预测反应	<b>WB:</b> Mus musculus
应用	WB IHC
推荐浓度	<b>WB:</b> 1:500 - 1:2000 <b>IHC:</b> 1:50 - 1:100
理论分子量	32kDa/37kDa/38kDa
实测分子量	38kDa
形式	Liquid
保存条件	Store at -20°C. Avoid freeze / thaw cycles. Buffer: PBS with 0.01% thiomersal,50% glycerol,pH7.3.
偶联物	Unconjugated
阳性对照	HeLa,NIH/3T3
细胞定位	Cytoplasm,Nucleus,nucleolus,nucleoplasm
纯化	Affinity purification

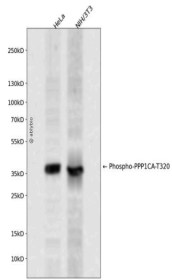
## 抗原信息

抗原信息	A synthetic phosphorylated peptide around T320 of human PPP1CA (NP_002699.1).
------	---

## 靶点信息

研究背景	The protein encoded by this gene is one of the three catalytic subunits of protein phosphatase 1 (PP1). PP1 is a serine/threonine specific protein phosphatase known to be involved in the regulation of a variety of cellular processes, such as cell division, glycogen metabolism, muscle contractility, protein synthesis, and HIV-1 viral transcription. Increased PP1 activity has been observed in the end stage of heart failure. Studies in both human and mice suggest that PP1 is an important regulator of cardiac function. Mouse studies also suggest that PP1 functions as a suppressor of learning and memory. Three alternatively spliced transcript variants encoding different isoforms have been found for this gene.
基因ID	5499
基因名	PPP1CA
Swiss	P62136 ( <a href="https://www.uniprot.org/uniprotkb/P62136/entry">https://www.uniprot.org/uniprotkb/P62136/entry</a> )
别名	PPP1CA,PP-1A,PP1A,PP1alpha,PPP1A,Phospho-PPP1CA-T320 Rabbit pAb

## 产品验证



Western blot analysis of Phospho-PPP1CA-T320 expressed in HeLa,NIH/3T3 using Phospho-PPP1CA-T320 R abbit pAb at 1:1000. Secondary antibody: HRP Goat Anti-Rabbit IgG (H+L) at 1:5000. Lysates/proteins: 30 ug per lane. Blocking buffer: 5% non-fat dry milk in TBST. Detection: ECL Enhanced Kit. Exposure time: 12 0s.

## 实验步骤

访问官网浏览详情: [www.ablybio.cn](http://www.ablybio.cn) (<https://www.ablybio.cn/>[www.ablybio.cn](http://www.ablybio.cn))