

Phospho-eIF4E-S209 Rabbit pAb

货号: **AYP14317**

产品信息

反应	Human,Mouse
宿主	Rabbit
克隆性	Polyclonal
预测反应	WB: Homo sapiens
应用	WB
推荐浓度	WB: 1:100 - 1:500
理论分子量	25kDa/27kDa/28kDa
实测分子量	25kDa
形式	Liquid
保存条件	Store at -20°C. Avoid freeze / thaw cycles. Buffer: PBS with 0.01% thiomersal,50% glycerol,pH7.3.
偶联物	Unconjugated
阳性对照	HT-29,NIH/3T3
细胞定位	Cytoplasm,P-body
纯化	Affinity purification

抗原信息

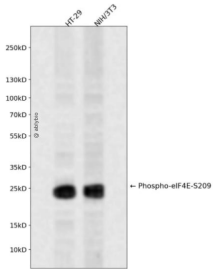
抗原信息	A synthetic phosphorylated peptide around S209 of human eIF4E (NP_001959.1).
序列	SGSTT

靶点信息

研究背景	The protein encoded by this gene is a component of the eukaryotic translation initiation factor 4F complex, which recognizes the 7-methylguanosine cap structure at the 5' end of messenger RNAs. The encoded protein aids in translation initiation by recruiting ribosomes to the 5'-cap structure. Association of this protein with the 4F complex is the rate-limiting step in translation initiation. This gene acts as a proto-oncogene, and its expression and activation is associated with transformation and tumorigenesis. Several pseudogenes of this gene are found on other chromosomes. Alternative splicing results in multiple transcript variants.
基因ID	1977

基因名	EIF4E
Swiss	P06730
别名	AUTS19;CBP;EIF4E1;EIF4EL1;EIF4F;eIF-4E;EIF4E

产品验证



Western blot analysis of Phospho-eIF4E-S209 expressed in HT-29,NIH/3T3 using Phospho-eIF4E-S209 Rabbit pAb at 1:1000. Secondary antibody: HRP Goat Anti-Rabbit IgG (H+L) at 1:5000. Lysates/proteins: 30ug per lane. Blocking buffer: 5% non-fat dry milk in TBST. Detection: ECL Enhanced Kit. Exposure time: 120s.

实验步骤

访问官网浏览详情: www.ablybio.cn