

BCR Rabbit pAb

货号: **AYP14311**

产品信息

反应	Human,Mouse,Rat
宿主	Rabbit
克隆性	Polyclonal
预测反应	WB: Mus musculus
应用	WB IHC
推荐浓度	WB: 1:500 - 1:2000 IHC: 1:50 - 1:100
理论分子量	137kDa/142kDa
实测分子量	150kDa
形式	Liquid
保存条件	Store at -20°C. Avoid freeze / thaw cycles. Buffer: PBS with 0.02% sodium azide,50% glycerol,pH7.3.
偶联物	Unconjugated
阳性对照	293T,Jurkat,HeLa,Mouse brain,Rat brain
细胞定位	Cell junction,postsynaptic cell membrane,postsynaptic density,synapse
纯化	Affinity purification

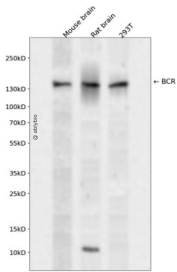
抗原信息

抗原信息	Recombinant fusion protein containing a sequence corresponding to amino acids 1-300 of human BCR (N P_004318.3).
序列	MVDPVGF AEAWKAQFPDSEPPRMELRSVGDIEQELERCKASIRRLEQEVNQERFRMIYLQTL LAKEKKS YDRQRWGFRRRAQAPDGASEPRASASRPQPAPADGADPPPAEEPEARPDGEGSPGKARPGTARRPGAAASGERDDRGPPASVAALRSNFERIRKGGHGQPGADAEKPFYVNVFHHHERGLVKVNDKEVSDRISSLGSQAMQMERKKSQHGAGSSVGDASRPPYGRSS ESSCGVDGDYEDAELNPRFLKDNLIDANGGSRPPWPPLEYQPYQSIYVGGMMEGEGKGPLLRSQ

靶点信息

研究背景	A reciprocal translocation between chromosomes 22 and 9 produces the Philadelphia chromosome, which is often found in patients with chronic myelogenous leukemia. The chromosome 22 breakpoint for this translocation is located within the BCR gene. The translocation produces a fusion protein which is encoded by sequence from both BCR and ABL, the gene at the chromosome 9 breakpoint. Although the BCR-ABL fusion protein has been extensively studied, the function of the normal BCR gene product is not clear. The protein has serine/threonine kinase activity and is a GTPase-activating protein for p21rac. Two transcript variants encoding different isoforms have been found for this gene.
基因ID	613
基因名	BCR
Swiss	P11274
别名	BCR;ALL;BCR1;CML;D22S11;D22S662;PHL

产品验证



Western blot analysis of BCR expressed in Mouse brain,Rat brain,293T using BCR Rabbit pAb at 1:1000. Secondary antibody: HRP Goat Anti-Rabbit IgG (H+L) at 1:5000. Lysates/proteins: 30ug per lane. Blocking buffer: 5% non-fat dry milk in TBST. Detection: ECL Enhanced Kit. Exposure time: 120s.

实验步骤

访问官网浏览详情: www.ablybio.cn