

# SLC9A3R1 Rabbit pAb

货号: **AYP14307**

## 产品信息

反应	Human,Mouse,Rat
宿主	Rabbit
克隆性	Polyclonal
预测反应	<b>WB:</b> Rattus norvegicus
应用	<a href="#">WB</a>
推荐浓度	<b>WB:</b> 1:1000 - 1:4000
理论分子量	22kDa/38kDa
实测分子量	50kDa
形式	Liquid
保存条件	Store at -20°C. Avoid freeze / thaw cycles. Buffer: PBS with 0.02% sodium azide,50% glycerol,pH7.3.
偶联物	Unconjugated
阳性对照	HepG2,293T,HT-29,MCF7,Mouse liver,Mouse kidney,Rat liver
细胞定位	Apical cell membrane,Cell projection,Cytoplasm,Endomembrane system,Peripheral membrane protein,filopodium,microvillus,ruffle
纯化	Affinity purification

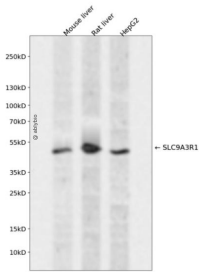
## 抗原信息

抗原信息	Recombinant fusion protein containing a sequence corresponding to amino acids 189-358 of human SLC9A3R1 (NP_004243.1).
序列	EASGLRAQDRIVEVNGVCMEGKQHGDVVS AIRAGGDET KLLVVDRETDEFFK KCRVIPSQEHLNGPLVPVFTNGEIQKEN SREALAEAALES PRPALVRSASSDTSEELNSQDSPPKQDSTAPSSSTSSSDPILDFNISLAMAKERAHQKRSSKRAPQMDW SKKNELFSNL

## 靶点信息

研究背景	This gene encodes a sodium/hydrogen exchanger regulatory cofactor. The protein interacts with and regulates various proteins including the cystic fibrosis transmembrane conductance regulator and G-protein coupled receptors such as the beta2-adrenergic receptor and the parathyroid hormone 1 receptor. The protein also interacts with proteins that function as linkers between integral membrane and cytoskeletal proteins. The protein localizes to actin-rich structures including membrane ruffles, microvilli, and filopodia. Mutations in this gene result in hypophosphatemic nephrolithiasis/osteoporosis type 2, and loss of heterozygosity of this gene is implicated in breast cancer.
基因ID	9368
基因名	SLC9A3R1
Swiss	O14745
别名	SLC9A3R1;EBP50;NHERF;NHERF-1;NHERF1;NPHLOP2

## 产品验证



Western blot analysis of SLC9A3R1 expressed in Mouse liver, Rat liver, HepG2 using SLC9A3R1 Rabbit p Ab at 1:1000. Secondary antibody: HRP Goat Anti-Rabbit IgG (H+L) at 1:5000. Lysates/proteins: 30ug per lane. Blocking buffer: 5% non-fat dry milk in TBST. Detection: ECL Enhanced Kit. Exposure time: 1 20s.

## 实验步骤

访问官网浏览详情: [www.ablybio.cn](http://www.ablybio.cn)