

C-Reactive Protein (CRP) Rabbit pAb

货号: **AYP14301**

产品信息

反应	Human,Mouse,Rat
宿主	Rabbit
克隆性	Polyclonal
预测反应	IHC: Rattus norvegicus
应用	WB IF/ICC
推荐浓度	WB: 1:500 - 1:2000 IF/ICC: 1:50 - 1:200
理论分子量	10kDa/25kDa
实测分子量	25kDa
形式	Liquid
保存条件	Store at -20°C. Avoid freeze / thaw cycles. Buffer: PBS with 0.01% thiomersal,50% glycerol,pH7.3.
偶联物	Unconjugated
阳性对照	Human serum,Mouse liver,Mouse lung,Rat spleen
细胞定位	Secreted
纯化	Affinity purification

抗原信息

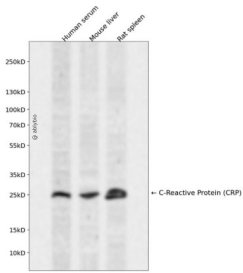
抗原信息	A synthetic peptide corresponding to a sequence within amino acids 100-200 of human C-Reactive Protein (CRP) (NP_000558.2).
序列	ILFEVPEVTVAPVHICTSWESASGIVEFWVDGKPRVRKSLKKGTYVGAEASIILGQEQDSFGGNFEGSQSLVGDIGNVNMWDFVLSPEINTIYLGPFSP

靶点信息

研究背景	The protein encoded by this gene belongs to the pentaxin family. It is involved in several host defense related functions based on its ability to recognize foreign pathogens and damaged cells of the host and to initiate their elimination by interacting with humoral and cellular effector systems in the blood. Consequently, the level of this protein in plasma increases greatly during acute phase response to tissue injury, infection, or other inflammatory stimuli.
------	---

基因ID	1401
基因名	CRP
Swiss	P02741
别名	CRP;PTX1

产品验证



Western blot analysis of C-Reactive Protein (CRP) expressed in Human serum, Mouse liver, Rat spleen using C-Reactive Protein (CRP) Rabbit pAb at 1:1000. Secondary antibody: HRP Goat Anti-Rabbit IgG (H+L) at 1:5000. Lysates/proteins: 30ug per lane. Blocking buffer: 5% non-fat dry milk in TB ST. Detection: ECL Enhanced Kit. Exposure time: 120s.

实验步骤

访问官网浏览详情: www.ablybio.cn