

CEACAM5 Rabbit pAb

货号: **AYP14271**

产品信息

反应	Human,Mouse
宿主	Rabbit
克隆性	Polyclonal
预测反应	WB: Mus musculus IP: Mus musculus
应用	WB
推荐浓度	WB: 1:500 - 1:2000
理论分子量	76kDa
实测分子量	170kDa
形式	Liquid
保存条件	Store at -20°C. Avoid freeze / thaw cycles. Buffer: PBS with 0.02% sodium azide,50% glycerol,pH7.3.
偶联物	Unconjugated
阳性对照	HeLa,Mouse pancreas
细胞定位	Cell membrane,GPI-anchor,Lipid-anchor
纯化	Affinity purification

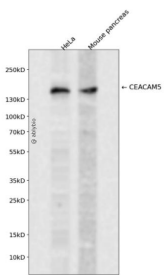
抗原信息

抗原信息	Recombinant fusion protein containing a sequence corresponding to amino acids 1-702 of human CEACAM5 (P06731).
序列	MESPSAPPHRWICIPWQRLLLTASLLTFWNPPTAKLTIESTPFNVAEGKEVLLLHVHNLQPQLHFGYSWYKGERVDGNRQIIGYVIGTQQATPGPAYSGREIYPNASLLIQNIIQNDTGFYTLHVIKSDLVNEEATGQFRVYPELPKPSISSNNSKPVEDKDAVAFTCEPETQDATYLWWVNNQSLPVPRLQLSNGNRTLTLFNVTRNDTASYKCETQNPVSARRSDSVILNVLYGPDAPTISPLNTSYRSGENLNLSCHAASNPPAQYSWFVNGTFQQSTQELFIPNITVNNSGSYTCQAHNSDTGLNRRTVTTITVYAEPPKPFITSNNSNPVEDEDAVALTCEPEIQNTTYLWWVNNQSLPVPRLQLSNDNRTLTLFSVTRNDVGPYECGIQNELSVDHSDPVILNVLYGPDPTISPSYTYRPGVNLSSCHAASNPPAQYSWLIDGNIQHTQELFISNITEKNSGLYTCQANNSASGHSRTTVKTITVSAELPKPSISSNNSKPVEDKDAVAFTCEPEAQNTTYLWWVNGQSLPVPRLQLSNGNRTLTLFNVTRNDARAYVCGIQNSVSANRSDPVTLDVLYGPDTPHSPDSSYLSGANLNLSCHSASNPSQYSWRINGIPQHTQVLFIAKITPNNGTYACFVSNLATGRNNSIVKSITVSASGTSPGLSAGATVGIMIGVLVGVALI

靶点信息

研究背景	This gene encodes a cell surface glycoprotein that represents the founding member of the carcinoembryonic antigen (CEA) family of proteins. The encoded protein is used as a clinical biomarker for gastrointestinal cancers and may promote tumor development through its role as a cell adhesion molecule. Additionally, the encoded protein may regulate differentiation, apoptosis, and cell polarity. This gene is present in a CEA family gene cluster on chromosome 19. Alternative splicing results in multiple transcript variants.
基因ID	1048
基因名	CEACAM5
Swiss	P06731
别名	CEACAM5;CD66e;CEA

产品验证



Western blot analysis of CEACAM5 expressed in HeLa, Mouse pancreas using CEACAM5 Rabbit pAb at 1:1000. Secondary antibody: HRP Goat Anti-Rabbit IgG (H+L) at 1:5000. Lysates/proteins: 30ug per lane. Blocking buffer: 5% non-fat dry milk in TBST. Detection: ECL Enhanced Kit. Exposure time: 120s.

实验步骤

访问官网浏览详情: www.ablybio.cn