

ID2 Rabbit pAb

货号: **AYP14267**

产品信息

反应	Human,Mouse,Rat
宿主	Rabbit
克隆性	Polyclonal
预测反应	WB: Rattus norvegicus
应用	WB IHC
推荐浓度	WB: 1:100 - 1:500 IHC: 1:50 - 1:200
理论分子量	14kDa
实测分子量	15KDa
形式	Liquid
保存条件	Store at -20°C. Avoid freeze / thaw cycles. Buffer: PBS with 0.05% proclin300,50% glycerol,pH7.3.
偶联物	Unconjugated
阳性对照	Rat liver,Rat kidney
细胞定位	Cytoplasm,Nucleus
纯化	Affinity purification

抗原信息

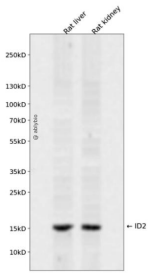
抗原信息	Recombinant fusion protein containing a sequence corresponding to amino acids 75-134 of human ID2 (NP_002157.2).
序列	LQIALDSHTIVSLHHQRPGQNQASRTPLTTLNTDISILSLQASEFPSELMNSDKALCG

靶点信息

研究背景	The protein encoded by this gene belongs to the inhibitor of DNA binding family, members of which are transcriptional regulators that contain a helix-loop-helix (HLH) domain but not a basic domain. Members of the inhibitor of DNA binding family inhibit the functions of basic helix-loop-helix transcription factors in a dominant-negative manner by suppressing their heterodimerization partners through the HLH domains. This protein may play a role in negatively regulating cell differentiation. A pseudogene of this gene is located on chromosome 3.
------	--

基因ID	3398
基因名	ID2
Swiss	Q02363
别名	ID2;GIG8;ID2A;ID2H;bHLHb26

产品验证



Western blot analysis of ID2 expressed in Rat liver,Rat kidney using ID2 Rabbit pAb at 1:1000. Secondary antibody: HRP Goat Anti-Rabbit IgG (H+L) at 1:5000. Lysates/proteins: 30ug per lane. Blocking buffer: 5% non-fat dry milk in TBST. Detection: ECL Enhanced Kit. Exposure time: 120s.

实验步骤

访问官网浏览详情: www.ablybio.cn