

# IFNLR1 Rabbit pAb

货号: **AYP14257**

## 产品信息

反应	Human,Mouse,Rat
宿主	Rabbit
克隆性	Polyclonal
预测反应	<b>WB:</b> Homo sapiens
应用	<a href="#">WB</a>
推荐浓度	<b>WB:</b> 1:1000 - 1:4000
理论分子量	23kDa/27kDa/54kDa/57kDa
实测分子量	53kDa
形式	Liquid
保存条件	Store at -20°C. Avoid freeze / thaw cycles. Buffer: PBS with 0.02% sodium azide,50% glycerol,pH7.3.
偶联物	Unconjugated
阳性对照	HT-29,Jurkat,MCF7,Mouse lung,Mouse heart,Mouse small intestine,Rat lung,Rat heart
细胞定位	Membrane,Single-pass type I membrane protein
纯化	Affinity purification

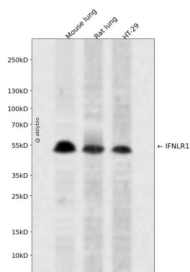
## 抗原信息

抗原信息	Recombinant fusion protein containing a sequence corresponding to amino acids 21-228 of human IFNLR 1 (NP_734464.1).
序列	RPRLAPPQNVTLTSQNFVYLTWPLGLGNPQDVTVFVAYQSSPTRRRWREVEECAGTKELLCSMMCLKKQDLYNKFKGR VRTVSPSSKSPWVESEYLDYLFVEVAPPVLVLTQTEEILSANATYQLPPCMPPLDLKYEVAFWKEGAGNKTLFPVTPHGQP VQITLQPAASEHHCLSAARTIYTFVSPKYKFSKPTCFLLEVPEANWA

## 靶点信息

研究背景	The protein encoded by this gene belongs to the class II cytokine receptor family. This protein forms a receptor complex with interleukin 10 receptor, beta (IL10RB). The receptor complex has been shown to interact with three closely related cytokines, including interleukin 28A (IL28A), interleukin 28B (IL28B), and interleukin 29 (IL29). The expression of all three cytokines can be induced by viral infection. The cells overexpressing this protein have been found to have enhanced responses to IL28A and IL29, but decreased response to IL28B. Three alternatively spliced transcript variants encoding distinct isoforms have been reported.
基因ID	163702
基因名	IFNLR1
Swiss	Q8IU57
别名	IFNLR1;CRF2/12;IFNLR;IL-28R1;IL28RA;LICR2

## 产品验证



Western blot analysis of IFNLR1 expressed in Mouse lung, Rat lung, HT-29 using IFNLR1 Rabbit pAb at 1:1000. Secondary antibody: HRP Goat Anti-Rabbit IgG (H+L) at 1:5000. Lysates/proteins: 30ug per lane. Blocking buffer: 5% non-fat dry milk in TBST. Detection: ECL Enhanced Kit. Exposure time: 120s.

## 实验步骤

访问官网浏览详情: [www.ablybio.cn](http://www.ablybio.cn)