

GJB1 Rabbit pAb

货号: **AYP14255**

产品信息

反应	Human,Mouse,Rat
宿主	Rabbit
克隆性	Polyclonal
预测反应	WB: Resveratrol
应用	WB
推荐浓度	WB: 1:200 - 1:1000
理论分子量	32kDa
实测分子量	32kDa/36kDa
形式	Liquid
保存条件	Store at -20°C. Avoid freeze / thaw cycles. Buffer: PBS with 0.02% sodium azide,50% glycerol,pH7.3.
偶联物	Unconjugated
阳性对照	LO2,MCF7,293T,A375,Mouse brain,Mouse liver,Rat liver,Rat kidney
细胞定位	Cell junction,Cell membrane,Multi-pass membrane protein,gap junction
纯化	Affinity purification

抗原信息

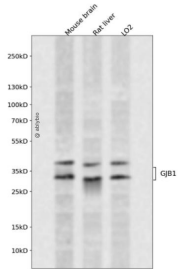
抗原信息	Recombinant fusion protein containing a sequence corresponding to amino acids 214-283 of human GJB1 (NP_000157.1).
序列	IRACARRAQRNSNPPSRKGSFGHRLSPEYKQNEINKLLSEQDGLKDILRRSPGTGAGLAEKSDRCSAC

靶点信息

研究背景	This gene encodes a member of the gap junction protein family. The gap junction proteins are membrane-spanning proteins that assemble to form gap junction channels that facilitate the transfer of ions and small molecules between cells. According to sequence similarities at the nucleotide and amino acid levels, the gap junction proteins are divided into two categories, alpha and beta. Mutations in this gene cause X-linked Charcot-Marie-Tooth disease, an inherited peripheral neuropathy. Alternatively spliced transcript variants encoding the same protein have been found for this gene.
基因ID	2705

基因名	GJB1
Swiss	P08034
别名	GJB1;CMTX;CMTX1;CX32

产品验证



Western blot analysis of GJB1 expressed in Mouse brain,Rat liver,LO2 using GJB1 Rabbit pAb at 1:1000. Secondary antibody: HRP Goat Anti-Rabbit IgG (H+L) at 1:5000. Lysates/proteins: 30ug per lane. Blocking buffer: 5% non-fat dry milk in TBST. Detection: ECL Enhanced Kit. Exposure time: 120s.

实验步骤

访问官网浏览详情: www.ablybio.cn