

Alpha-1 Antitrypsin (SERPINA1) Rabbit pAb

货号: AYP14253

产品信息

| | |
|-------|--|
| 反应 | Human,Mouse,Rat |
| 宿主 | Rabbit |
| 克隆性 | Polyclonal |
| 预测反应 | WB: Homo sapiens |
| 应用 | WB IHC IF/ICC |
| 推荐浓度 | WB: 1:100 - 1:500 IHC: 1:50 - 1:200 IF/ICC: 1:50 - 1:200 |
| 理论分子量 | 34kDa/40kDa/46kDa |
| 实测分子量 | 51KDa |
| 形式 | Liquid |
| 保存条件 | Store at -20°C. Avoid freeze / thaw cycles. Buffer: PBS with 0.02% sodium azide,50% glycerol,pH7.3. |
| 偶联物 | Unconjugated |
| 阳性对照 | HepG2,293T,Mouse lung |
| 细胞定位 | Endoplasmic reticulum,Secreted,extracellular matrix,extracellular space |
| 纯化 | Affinity purification |

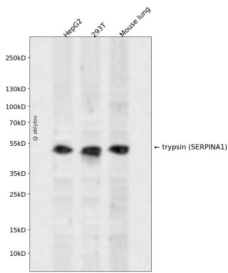
抗原信息

| | |
|------|--|
| 抗原信息 | Recombinant fusion protein containing a sequence corresponding to amino acids 25-315 of human Alpha-1 Antitrypsin (Alpha-1 Antitrypsin (SERPINA1)) (NP_000286.3). |
| 序列 | EDPQGDAAQKTDTSHHQDHDPTFNKITPNLAEFASFSLYRQLAHQSNSTNIFFSPVSIATAFAMLSLGTKADTHDEILEGLN FNLTEIPEAQIHEGFQELLRTLNPDSQLQLTTGNGLFLSEGLKLVDFLEDVKKLYHSEFTVNFQDTEEAKKQINDYVEK GTQGKIVDLVKELDRDRTVFALVNYIFFKKGWERPFVVKDTEEEDFHVDQVTTVKVPMMKRLGMFNIQHCKKLSSWVLLM KYLGNATAIFFLPDEGKLQHLENLTHDIITKFLNEDRRSASLHLPKL |

靶点信息

| | |
|-------|--|
| 研究背景 | The protein encoded by this gene is secreted and is a serine protease inhibitor whose targets include elastase, plasmin, thrombin, trypsin, chymotrypsin, and plasminogen activator. Defects in this gene can cause emphysema or liver disease. Several transcript variants encoding the same protein have been found for this gene. |
| 基因ID | 5265 |
| 基因名 | SERPINA1 |
| Swiss | P01009 |
| 别名 | SERPINA1;A1A;A1AT;AAT;PI;PI1;PRO2275;alpha1AT |

产品验证



Western blot analysis of trypsin (SERPINA1) expressed in HepG2, 293T, Mouse lung using Alpha-1 Antitrypsin (SERPINA1) Rabbit pAb at 1:1000. Secondary antibody: HRP Goat Anti-Rabbit IgG (H+L) at 1:5000. Lysates/proteins: 30ug per lane. Blocking buffer: 5% non-fat dry milk in TBST. Detection: ECL Enhanced Kit. Exposure time: 120s.

实验步骤

访问官网浏览详情: www.ablybio.cn