

TAS1R3 Rabbit pAb

货号: **AYP14251**

产品信息

反应	Human,Mouse,Rat
宿主	Rabbit
克隆性	Polyclonal
预测反应	WB: Rattus norvegicus
应用	WB
推荐浓度	WB: 1:500 - 1:1000
理论分子量	93kDa
实测分子量	93kDa
形式	Liquid
保存条件	Store at -20°C. Avoid freeze / thaw cycles. Buffer: PBS with 0.05% proclin300,50% glycerol,pH7.3.
偶联物	Unconjugated
阳性对照	K-562,Mouse stomach,Rat testis
细胞定位	Cell membrane,Multi-pass membrane protein
纯化	Affinity purification

抗原信息

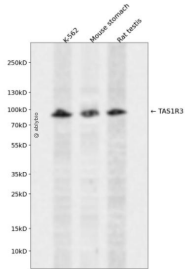
抗原信息	Recombinant fusion protein containing a sequence corresponding to amino acids 400-570 of human TAS1R3 (NP_689414.1).
序列	VAQALHNTLQCNASGCPAQDPVKPWQLLENMYNLTFHVGGLPLRFDSSGNVDMEDLKLWVWQGSVPRLHDVGRFN GSLRTERLKIRWHTSDNQKPVSRCSRQCQEGQVRRVKGFHSCCYDCVDCEAGSYRQNPDDIACTFCGQDEWSPERSTR CFRRRSRFLAWGEPAVL

靶点信息

研究背景	The protein encoded by this gene is a G-protein coupled receptor involved in taste responses. The encoded protein can form a heterodimeric receptor with TAS1R1 to elicit the umami taste response, or it can bind with TAS1R2 to form a receptor for the sweet taste response.
基因ID	83756

基因名	TAS1R3
Swiss	Q7RTX0
别名	TAS1R3;T1R3

产品验证



Western blot analysis of TAS1R3 expressed in K-562, Mouse stomach, Rat testis using TAS1R3 Rabbit pAb at 1:1000. Secondary antibody: HRP Goat Anti-Rabbit IgG (H+L) at 1:5000. Lysates/proteins: 30ug per lane. Blocking buffer: 5% non-fat dry milk in TBST. Detection: ECL Enhanced Kit. Exposure time: 120s.

实验步骤

访问官网浏览详情: www.ablybio.cn