

SLC25A1 Rabbit pAb

货号: AYP14240

产品信息

| | |
|-------|--|
| 反应 | Human,Mouse,Rat |
| 宿主 | Rabbit |
| 克隆性 | Polyclonal |
| 预测反应 | WB: Homo sapiens |
| 应用 | WB IF/ICC |
| 推荐浓度 | WB: 1:500 - 1:2000 IF/ICC: 1:50 - 1:200 |
| 理论分子量 | 34kDa |
| 实测分子量 | 34kDa |
| 形式 | Liquid |
| 保存条件 | Store at -20°C. Avoid freeze / thaw cycles. Buffer: PBS with 0.02% sodium azide,50% glycerol,pH7.3. |
| 偶联物 | Unconjugated |
| 阳性对照 | LO2,22Rv1,BT-474 |
| 细胞定位 | Mitochondrion inner membrane,Multi-pass membrane protein |
| 纯化 | Affinity purification |

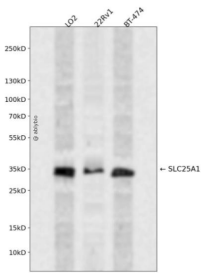
抗原信息

| | |
|------|---|
| 抗原信息 | Recombinant fusion protein containing a sequence corresponding to amino acids 1-311 of human SLC25A1 (NP_005975.1). |
| 序列 | MPAPRAPRALAAAAPASGKAKLTHPGKAILAGGLAGGIEICITFPTEYVKTQLQLDERSHPPRYRGIGDCVRQTVRSHGVLG LYRGLSSLLYGSIPKAAVRFGMFEFLSNHMRDAQGRLDSTRLLCGLGAGVAEAVVVVCPMETIKVKFIHDQTSNPKYRG FFHGVREIVREQGLKGTYYQGLTATVLKQGSNQAIRFFVMTSLRNWYRGDNPKNPMNPLITGVFGAIGAASVFGNTPLDVI KTRMQGLEAHKYRNTWDCGLQILKKEGLKAFYKGTVPRLGRVCLDVAIVFVIYDEVKLLNKVWKT |

靶点信息

| | |
|-------|--|
| 研究背景 | This gene encodes a member of the mitochondrial carrier subfamily of solute carrier proteins. Members of this family include nuclear-encoded transporters that translocate small metabolites across the mitochondrial membrane. This protein regulates the movement of citrate across the inner membranes of the mitochondria. Mutations in this gene have been associated with combined D-2- and L-2-hydroxyglutaric aciduria . Pseudogenes of this gene have been identified on chromosomes 7, 11, 16, and 19. Alternative splicing results in multiple transcript variants. |
| 基因ID | 6576 |
| 基因名 | SLC25A1 |
| Swiss | P53007 |
| 别名 | SLC25A1;CTP;D2L2AD;SEA;SLC20A3 |

产品验证



Western blot analysis of SLC25A1 expressed in LO2,22Rv1,BT-474 using SLC25A1 Rabbit pAb at 1:1000. Secondary antibody: HRP Goat Anti-Rabbit IgG (H+L) at 1:5000. Lysates/proteins: 30ug per lane. Blocking buffer: 5% non-fat dry milk in TBST. Detection: ECL Enhanced Kit. Exposure time: 120s.

实验步骤

访问官网浏览详情: www.ablybio.cn