

XPNPEP2 Rabbit pAb

货号: AYP14235

产品信息

反应	Human,Mouse,Rat
宿主	Rabbit
克隆性	Polyclonal
预测反应	WB: Mus musculus IHC: Mus musculus
应用	WB
推荐浓度	WB: 1:1000 - 1:2000
理论分子量	75kDa
实测分子量	76kDa
形式	Liquid
保存条件	Store at -20°C. Avoid freeze / thaw cycles. Buffer: PBS with 0.02% sodium azide,50% glycerol,pH7.3.
偶联物	Unconjugated
阳性对照	293T,A-549,HepG2,HT-29,SW480,Mouse kidney,Mouse heart,Mouse small intestine,Rat kidney
细胞定位	Cell membrane,GPI-anchor,Lipid-anchor
纯化	Affinity purification

抗原信息

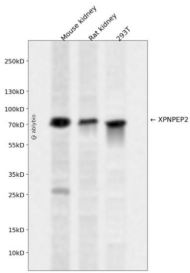
抗原信息	Recombinant fusion protein containing a sequence corresponding to amino acids 22-240 of human XPNPEP2 (NP_003390.4).
序列	HTKPVDLGGQDVRNCSTNPPYLPVTVVNTTMSLTALRQQMQTQNL SAYIIPGTD AHMNEYIGQHDERRAWITGFTGSAG TAVVTM KKA AVWTD SRYWTQA ERQMDCN WELHKEVGTTP IVTWLLTEIPAGGRVGFDPFLLSIDTWESYDLALQGSNR QLVSITTNLVDLVWGSERPPVPNQIYALQEFTGSTWQEKVSGVRSQM QKHQKVPTAVLLS

靶点信息

研究背景	Aminopeptidase P is a hydrolase specific for N-terminal imido bonds, which are common to several collagen degradation products, neuropeptides, vasoactive peptides, and cytokines. Structurally, the enzyme is a member of the 'pita bread fold' family and occurs in mammalian tissues in both soluble and GPI-anchored membrane-bound forms. A membrane-bound and soluble form of this enzyme have been identified as products of two separate genes.
------	---

基因ID	7512
基因名	XPNPEP2
Swiss	O43895
别名	XPNPEP2;AEACEI;APP2

产品验证



Western blot analysis of XPNPEP2 expressed in Mouse kidney,Rat kidney,293T using XPNPEP2 Rabbit p Ab at 1:1000. Secondary antibody: HRP Goat Anti-Rabbit IgG (H+L) at 1:5000. Lysates/proteins: 30ug per lane. Blocking buffer: 5% non-fat dry milk in TBST. Detection: ECL Enhanced Kit. Exposure time: 12 0s.

实验步骤

访问官网浏览详情: www.ablybio.cn